



the chosen ones | 2021



**A WORLD OF
HIDDEN STORIES**





5 - Placebo

13 - Tulip

21 - Shellby

29 - Modupoint LED

39 - Hollow

47 - Minute

57 - Thimble

65 - K & Pupil

75 - Marbul

87 - Semih

95 - Medard

105 - Qbini

125 - Smart

145 - Pista

165 - Rektor

171 - Flat Moon

181 - Vaeder

187 - Como Corner

195 - Drupl

203 - SLD50

219 - MP78

225 - Bold

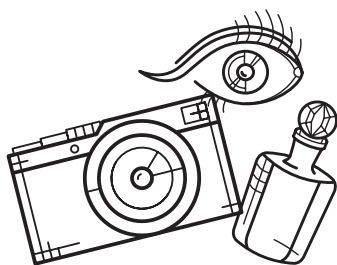
231 - Dent

237 - Sulfer

243 - Trapz

251 - Duell

MAKING THE EXTRAORDINARY.



Immerse yourself in our new catalogue made especially for you. Do it slowly, as you travel through. Let yourself be inspired by extraordinary Modular Lighting Instruments designs. Look at the attention to detail, surprising light effects, the unusual style. Visualize each one as a functional and sophisticated luminaire that will communicate an original, elegant expression to your architectural lighting projects.



PLACEBO
PRIVATE RESIDENCE, VALENCIA (ES)



PLACEBO

Design — Jeffrey Huyghe

Born out of sketches from the mystic mind of Modular designer Jeffrey Huyghe, the idea of Placebo quickly became a product family. Placebo isn't just one luminaire. Two shapes, each in 2 sizes, and all 4 offer 2 lighting possibilities. Placebo is a multitude of playful general lighting luminaires for residential, hospitality and small retail spaces..

Playful Placebo effect

8 models to play with! Can you even wrap your head around the trail of possibilities? Imagine a row or flock of hanging Placebos, above a dining room table or a long counter space. Alternating between up and down lights, a tube shape or a ball shape. Creating patterns galore, this Placebo effect brings pure pleasure.

A feast of mix & match

The aluminium LED unit of all models is available in white and black structure, anodised gold, champagne, bronze, silver bronze and black. If you can manage to decide on a finish, move on to choosing a tube shape or a ball shape, each in 2 sizes, with an up or downwards light effect. Also, will it be gear included or excluded? You can choose it all. How's that for modularity?

Complexity in disguise

Deceptively simple in appearance, this pendant light hides intriguing features. How can both up and down lights look so identical? Hint: the up light reveals a small hole at the top of the glass. So why then, can't we see the cable through the glass? A 3-layered, hand blown glass does the trick.

colours *black struc, white struc, ano black, ano bronze, ano champagne, ano silver bronze*

output* *625lm – 9W*

cct *2700K, 3000K*

cri *90+*

dimming *trailing edge, 1-10V, pushdim, dali*

-

more info? supermodular.com/en/placebo



PLACEBO
PRIVATE RESIDENCE, VALENCIA (ES)



PLACEBO UP WITH GLASS TUBE 46MM UP - ANO CHAMPAGNE
PLACEBO DOWN WITH GLASS TUBE 46MM DOWN - ANO CHAMPAGNE



PLACEBO UP WITH GLASS BALL Ø155MM UP - WHITE STRUCTURE



PLACEBO DOWN WITH GLASS BALL Ø90MM DOWN - ANO BRONZE



PLACEBO DOWN WITH GLASS TUBE 130MM DOWN - BLACK STRUCTURE
PLACEBO UP WITH GLASS TUBE 130MM UP - BLACK STRUCTURE



PLACEBO COLOURS: WHITE STRUCTURE / ANO CHAMPAGNE / ANO SILVER BRONZE / ANO BRONZE / ANO BLACK / BLACK STRUCTURE



PLACEBO UP WITH GLASS BALL Ø90MM UP - ANO CHAMPAGNE



PLACEBO DOWN WITH GLASS TUBE 46MM DOWN - ANO BRONZE



PLACEBO
PRIVATE RESIDENCE, VIENNA (AT)

the chosen ones

PLACEBO



PLACEBO
PRIVATE RESIDENCE, VALENCIA (ES)



PLACEBO DOWN WITH GLASS BALL Ø90MM DOWN - ANO CHAMPAGNE
PLACEBO DOWN WITH GLASS BALL Ø155MM DOWN - ANO CHAMPAGNE



TULIP BLOOM



TULIP BLOOM
TULIP BLOSSOM



TULIP

Design — Studio Kees

An architectural pendant light, Tulip is the perfect couple, impossible to miss when walking into a space. Complementary, accessible and playful. Pure and basic shapes. Tulip's long stem gives it an air of elegance and adds grandeur. Its two shapes, Blossom and Bloom, boast a complementary design, and display both cosy mood light and general light.

Designed for each other

Elegant, balanced, made to fit together, Blossom and Bloom. Look closely at the clever design, and you'll notice that the top part of the body is identical in both. From the center line and down, the angles of the cups are complementary. A smooth parallel line emerges between the shapes and enhances the architectural quality of Tulip's design.

Black, white, golden inside

Tulip invites you to play with its colours. A couple in black or white structure. Experiment with many in one colour or mix them with both. Designers can add a third colour, a stunning gold finish on the inside. An irresistible glow will create a soft, warm ambience with each Tulip.

Flowers easy to handle

With its E27 socket, Tulip can be paired with LED retrofit bulbs. Go a step further and opt for connected-ready Hue bulbs that enable tunable white, coloured lights, warm dim and lots more. Bright and cool, warmer and ambient. Hue's a natural match to Tulip, as it reflects the rhythms of a flower's reaction to sunlight: open by day, closing at night. And thanks to Tulip's chalice, the bulb remains unseen, leaving its design uninterrupted.

versions *Blossom & Bloom*

colours *black struc*
black struc - gold
white struc
white struc - gold

lamp *E27 socket*

-

more info? supermodular.com/en/tulip



TULIP BLOOM
TULIP BLOSSOM
PRIVATE RESIDENCE, COPENHAGEN (DK)



TULIP BLOSSOM - BLACK STRUCTURE/GOLD



TULIP BLOSSOM - WHITE STRUCTURE



TULIP BLOOM - WHITE STRUCTURE/GOLD



TULIP BLOOM - BLACK STRUCTURE/GOLD



TULIP BLOSSOM - BLACK STRUCTURE/GOLD



the chosen ones

TULIP

TULIP BLOOM
TULIP BLOSSOM
PRIVATE RESIDENCE, COPENHAGEN (DK)

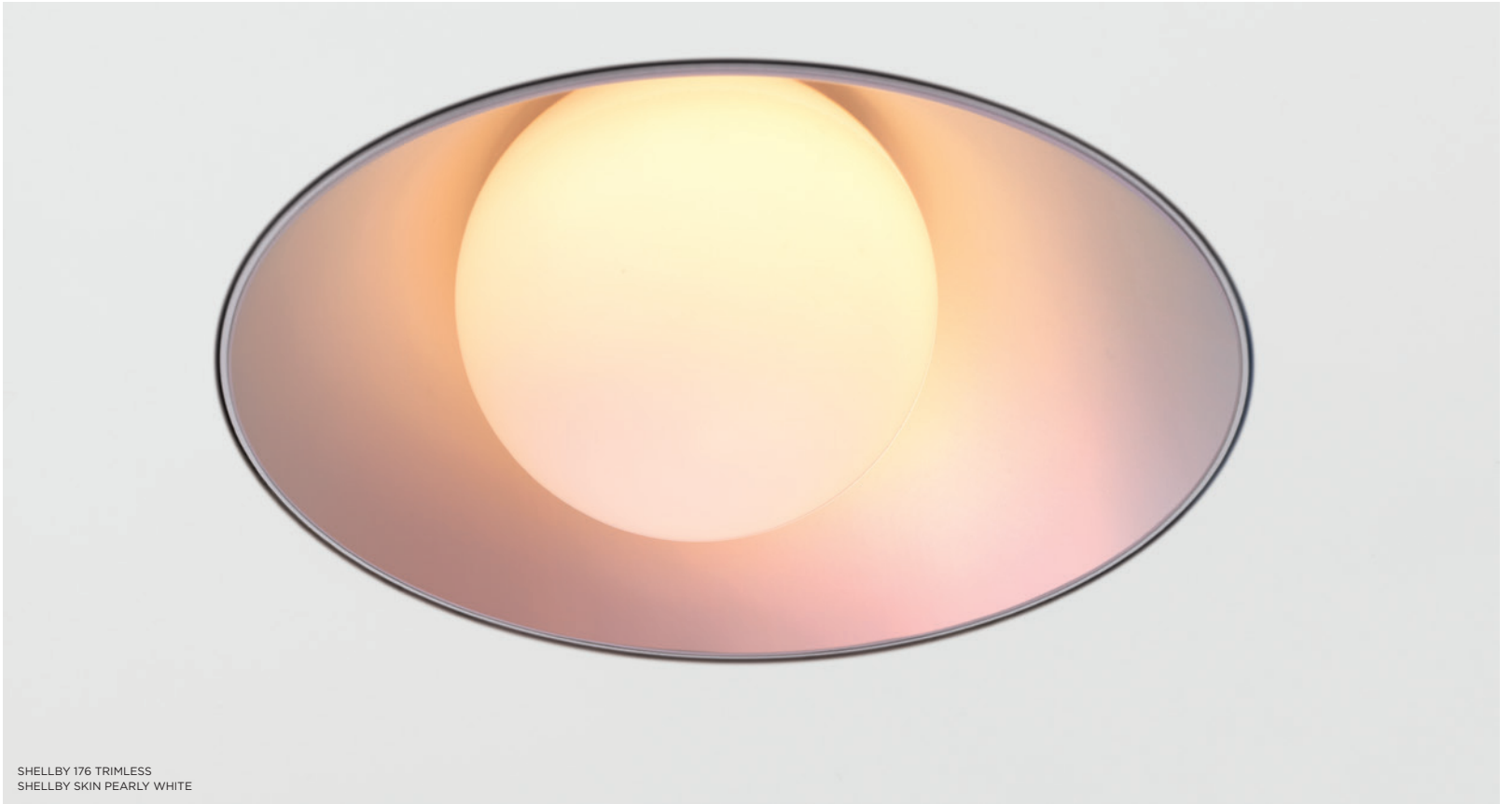




the chosen ones

TULIP

TULIP BLOOM
TULIP BLOSSOM
CAFE, AMSTERDAM (NL)



SHELLBY 176 TRIMLESS
SHELLBY SKIN PEARLY WHITE



SHELLBY 184
SHELLBY SKIN GOLD



SHELLBY

Design — Jeffrey Huyghe

Shellby for general lighting and Shellby for creating mood. A clash of functions, yet the exceptional coexistence of purpose. Sun or moon? Definitely both. Powerful from above, it indisputably lights and energizes daily activities. Softer and a little to the side, it inspires calm and warmth. Shellby's playful and asymmetrical design lets you experiment with aesthetic effects that will charm the entire room.

General light and mood

Our Shellby is quite unique. It offers general lighting by day, and turns into a lovely mood maker by night. Dim it, with or without integrated warm dim, on ceilings or on walls, it's your light story to tell.

Many Shellbies

Express your space with more than one Shellby. Its asymmetrical, deep-recessed design and seemingly floating sphere add to its playfulness, and enable you to create all kinds of artistic patterns and configurations.

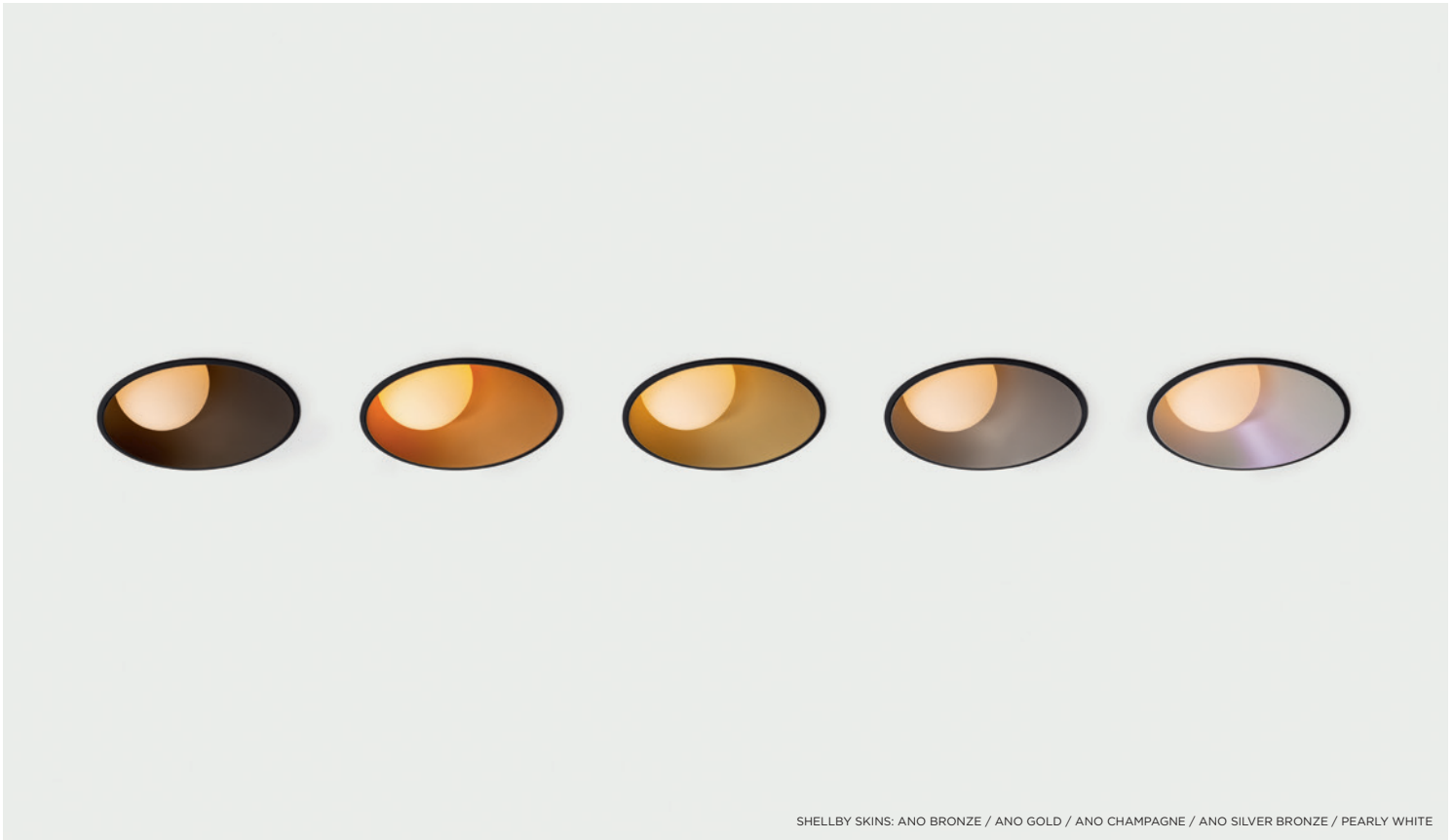
A personal touch of colour

Shellby skin is a decorative inlay made to easily click in Shellby's inner cup. Add a warm, cozy touch to your space by choosing from 4 anodized colours: silver bronze, bronze, champagne and gold. And for a seashell look, experiment with our new pearly white colour. As the light is on, pearly white gives a neutral white look & feel. Off, its unique finish will change to shades of purple, blue, green, and more, as you walk around the luminaire.

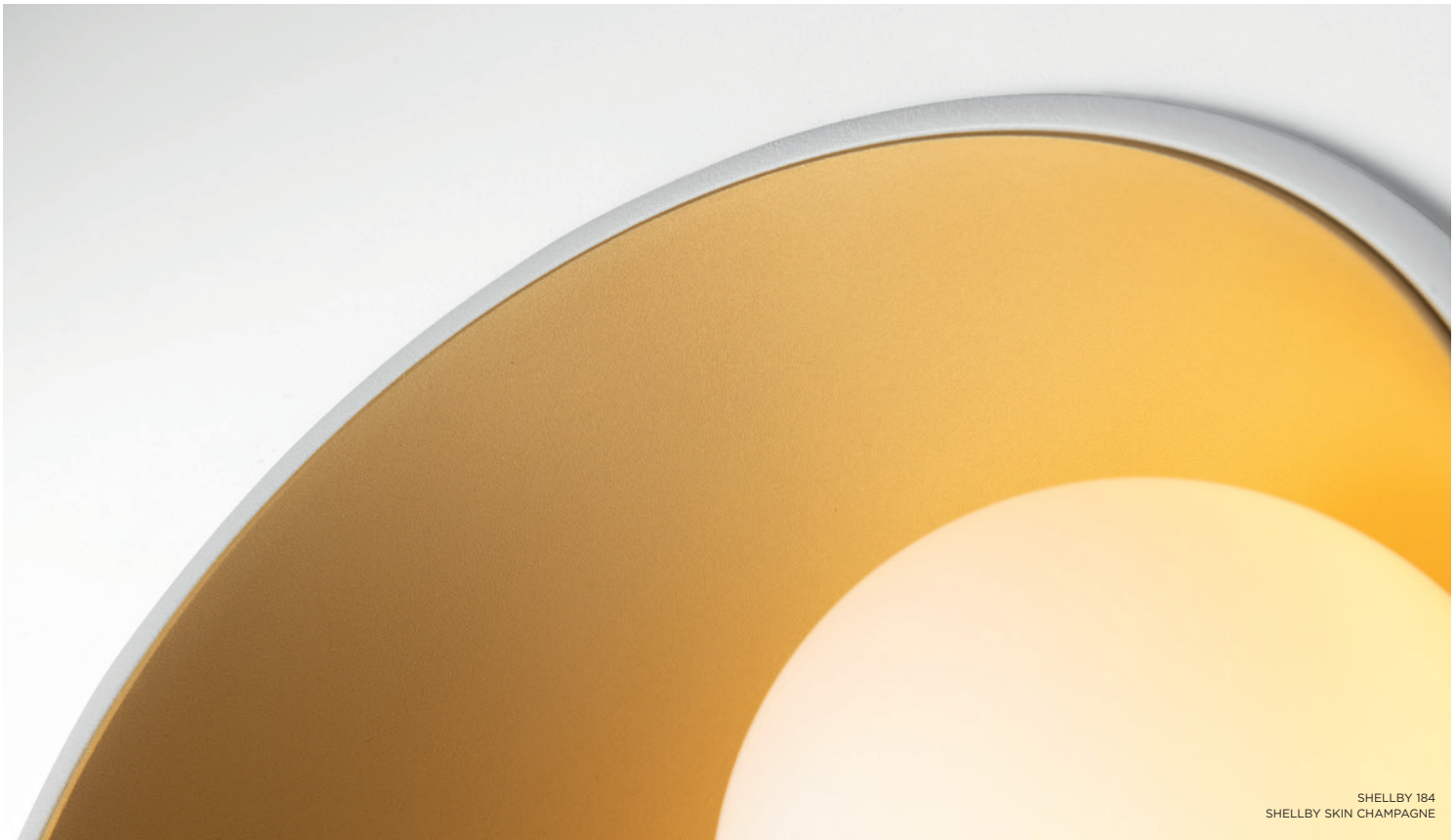
version	<i>trim & trimless</i>
colours	<i>black struc, white struc</i>
accessory	<i>Shellby skin - pearly white, ano silver bronze, ano champagne, ano gold, ano bronze</i>
output*	<i>516lm – 8.5W</i>
cct	<i>2700K, 3000K, 1800K-3000K (warm dim)</i>
cri	<i>90+</i>
dimming	<i>trailing edge, 1-10V, pushdim, dali (GE)</i>
ip	<i>55</i>
-	
more info?	<i>supermodular.com/en/shellby</i>

*output for white struc, 3000K





SHELLBY SKINS: ANO BRONZE / ANO GOLD / ANO CHAMPAGNE / ANO SILVER BRONZE / PEARLY WHITE



SHELLBY 184
SHELLBY SKIN CHAMPAGNE





the chosen ones

SHELLBY

SHELLBY
PRIVATE RESIDENCE, ZOTTEGEM (BE)



SHELLBY
PRIVATE RESIDENCE, LISBON (PT)





MARBULITO JACK, MARBULITO JACK SUSPENSION
CEILING BASE (ROUND) FOR 3X JACK
PRIVATE RESIDENCE - ANTWERP (BE)



MODUPOINT LED

Changing luminaires, without changing anything. If that makes any sense it's because of our newly redesigned Modupoint LED. Unique in our product families, Modupoint is a stand-alone, easy-to-install light system. A surface-mounted ceiling base with power points welcoming a playful variety of plug-in lights and heights.

Miniaturization for everyone

For spaces where creating a lighting expression with miniaturized design was not possible before, Modupoint LED makes it possible now. With the ceiling base hiding the gear in one neat package, possibilities open up for our charming Marbulito & Médard in black or white structure, and Minude in all its rich colours.

Plug, plug, plug and play

The ceiling base is available in 2 rectangle-shape sizes, with 2 or 3 outlets, and in a circular shape with 3 outlets. In addition to the 3 miniaturized designs, Modular offers the option to add thin extender sticks to adjust the length of the lights and play with levels. All components can be changed or added.

Connected-ready, ready for life

Now, with so many lights, heights, colours and styles, we couldn't skip the option of adding a dimming system. Modupoint's ceiling bases can be fitted with different dimming protocols: Tre dim, 1-10V, DALI and Casambi, a powerful connected system that gives users the option to control smart lighting and transforms Modupoint LED into a true light for life.

colours	<i>Ceiling base: black struc, white struc Marbulito: black struc, white struc Médard: black struc, white struc Minude: anodized black, anodized bronze, anodized champagne, anodized silver bronze, black struc, white struc</i>
output*	<i>Marbulito: 322lm - 4.4W⁽¹⁾ Médard: 671lm - 8.5W⁽²⁾ Minude: 610lm - 8.1W⁽³⁾</i>
cct	<i>2700K, 3000K, 1800-3000K (warm dim)</i>
cri	<i>90+</i>
dimming	<i>trailing edge, 1-10V, pushdim, dali, casambi</i>
-	
more info?	<i>supermodular.com/en/marbulito-jack supermodular.com/en/medard-jack supermodular.com/en/minude-jack supermodular.com/en/ceiling-base-jack</i>

*output for white struc, 3000K, 28°(1)/25°(2)/30°(3)



MARBULITO JACK



MEDARD JACK



MINUDE JACK



MARBULITO SUSPENSION JACK



MINUDE SUSPENSION JACK



CEILING BASE ROUND FOR 3X JACK



CEILING BASE FOR 2X JACK



CEILING BASE FOR 3X JACK



MODUPOINT LED STICK 10/20/30CM





MARBULITO JACK
CEILING BASE ROUND FOR 3X JACK



MARBULITO JACK
CEILING BASE FOR 3X JACK
MODUPOINT LED STICK 10/30CM



MARBULITO JACK
CEILING BASE FOR 3X JACK



MARBULITO JACK
MODUPOINT LED STICK 20CM



MARBULITO JACK
CEILING BASE ROUND FOR 3X JACK
MODUPOINT LED STICK 10/20/30CM



MARBULITO SUSPENSION JACK
CEILING BASE FOR 2X JACK



MARBULITO SUSPENSION JACK
CEILING BASE ROUND FOR 3X JACK



MARBULITO SUSPENSION JACK
CEILING BASE FOR 3X JACK



MARBULITO SUSPENSION JACK, CEILING BASE ROUND FOR 3X JACK
PRIVATE RESIDENCE, PARIS (FR)



MEDARD 42 JACK
CEILING BASE FOR 2X JACK, CEILING BASE FOR 3X JACK
PRIVATE RESIDENCE, PARIS (FR)







the chosen ones

MODUPOINT LED — MINUDE JACK

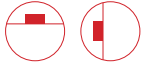
MINUDE 45 ADJUSTABLE SEMI-RECESSED, MINUDE 45 SUSPENSION JACK
CEILING BASE FOR 3X JACK
PRIVATE RESIDENCE, ANTWERP (BE)



HOLLOW 125



HOLLOW 115 TRIMLESS



HOLLOW

Design — James Van Vossel

For designer James Van Vossel, it was time to rethink pure, simple forms. That's when the tube came in. And out. His creation, Hollow, reignites the excitement and mystery surrounding this classical shape. How does it work? Where's the light coming from? Lit or dark, open or closed. A symphony of opposites, Hollow is the luminaire that works with you. Adjustable and versatile. For spaces that welcome intrigue and personality.

Design that pops

Hollow expresses itself as you interact with it. It's playful and loves a good mystery. One design, invisible and visible. In one way, its integration makes it hide, being one with the environment, showing nothing but glowing cavities. In its other positions, Hollow complements ceilings or walls, a slight extension of the surface, casting light in an ocean of space. Hollow is a surprise and won't be revealed until you touch. Needless to say, the shy need not apply.

Present, not present

Rediscover light with Hollow's marvellous, unusual adjustability. Hollow's smooth rotation system slides open to let you choose a 90°, 60° or 45° angle, or anything else in between. A powerful beam comes out one end, and a glow can be seen from the back side, reflecting off the inner curve of the cup. When completely horizontal, Hollow offers a discreet, ambient light emanating from each end of the tube. Designers can play with different light effects to change the ambience.

Colours to caress

Experiment with colours and use the cup's inner glow as an additional light source. Gold for a warm, cosy mood maker. White, for a decisive indirect light effect. Black, for a stronger presence, but with softer, indirect light.

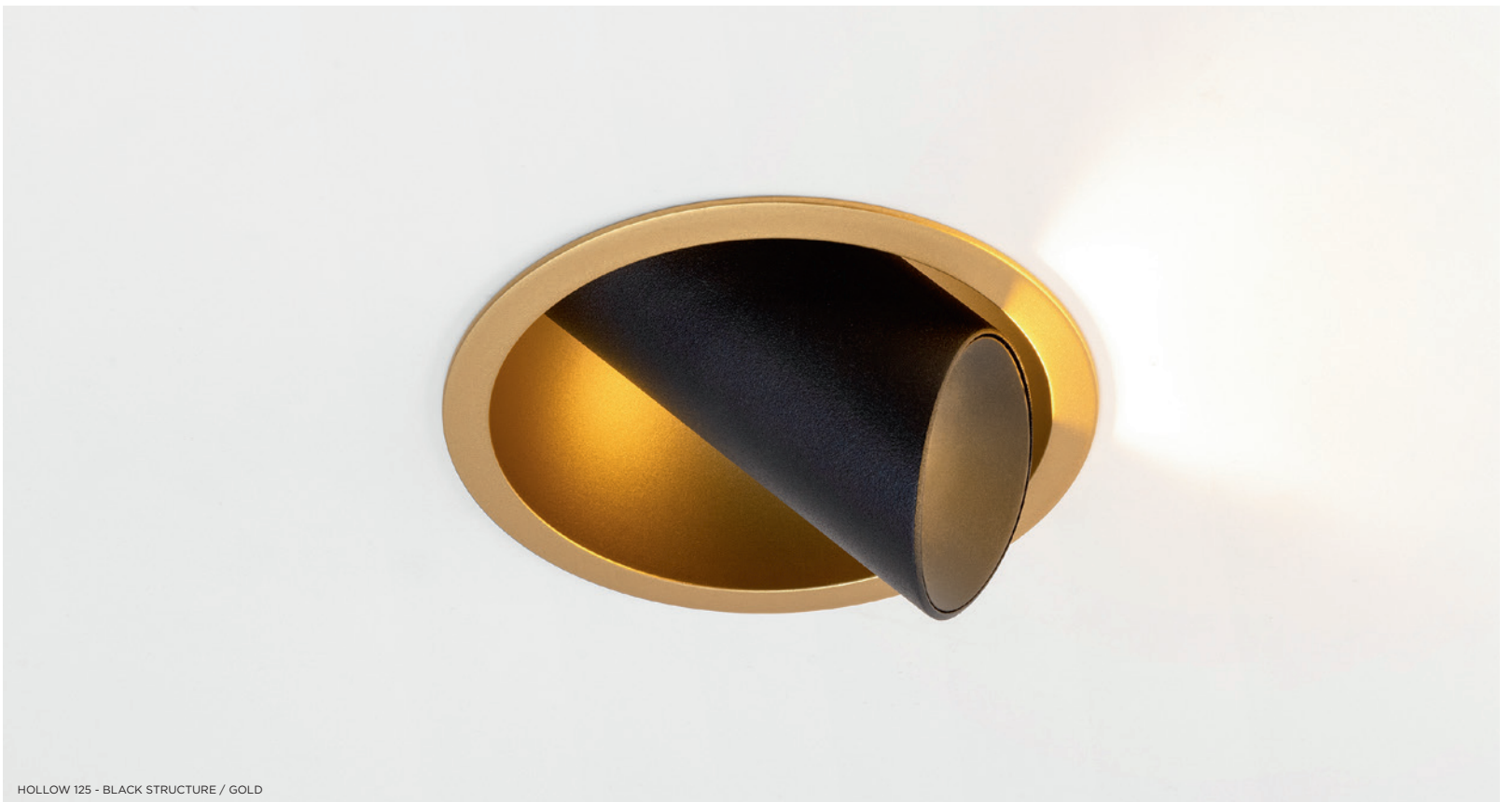
versions	<i>adjustable trim & trimless</i>
colours	<i>white struc - white struc black struc - black struc black struc - gold black struc - white struc gold - gold</i>
output*	<i>476lm – 8.5W</i>
cct	<i>2700K, 3000K</i>
cri	<i>90+</i>
optics	<i>30°</i>
dimming	<i>trailing edge, 1-10V, pushdim, dali (GE)</i>
adjustability	<i>h 360° v 90°</i>
-	

more info? supermodular.com/en/hollow

*output for white struc, 3000K, 30°



HOLLOW 115 TRIMLESS - GOLD/GOLD



HOLLOW 125 - BLACK STRUCTURE / GOLD

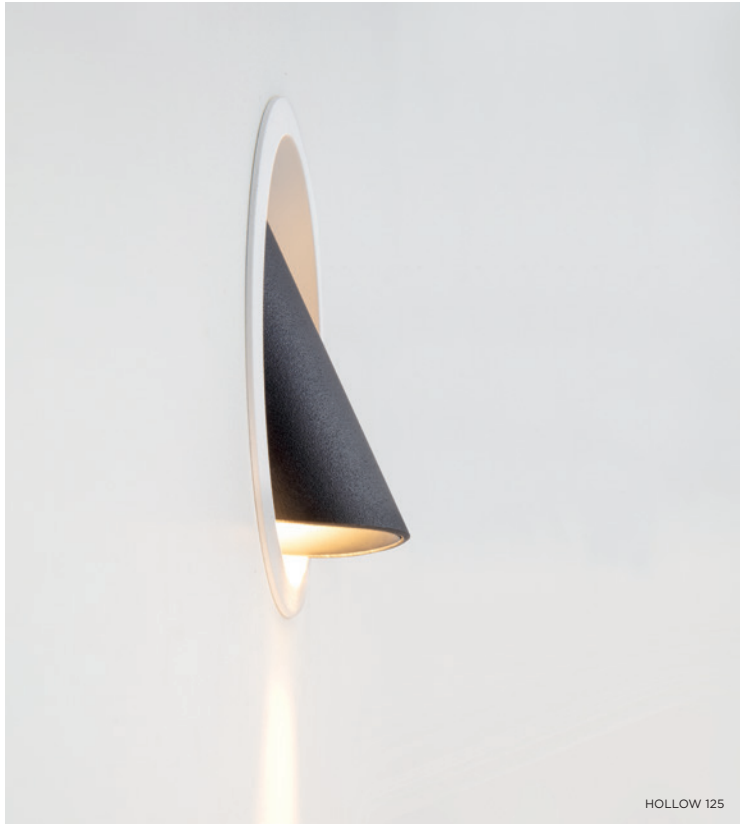


the chosen ones

HOLLOW

HOLLOW
PRIVATE RESIDENCE, ZOTTEGEM (BE)









the chosen ones

HOLLOW

HOLLOW
PRIVATE RESIDENCE, LISSEWEGE (BE)



MINUDE SUSPENSION
PRIVATE RESIDENCE, STOCKHOLM (SE)



MINUDE

Our miniature spot is an extremely simple cylinder-shaped light fixture with a lot to show. Endless applications, a variety of rich colours, phenomenal yogic flexibility. A deep-recessed light source for a glare-free light effect. To express a refined and minimalistic look & feel on walls or low ceiling executions, on high ceilings in its stand-alone suspended variant. Or go for more than one Minude, on our Pista track or Modupoint LED jack system, as spot lights or suspended. This little spot will make a big impression.

Pure form, rich colours

The pure cylindrical shape with a thin, sharp edge and curved inner side hovers stylishly from a thin 2m matte black cable. Showing off its 6 rich colours – black ano, champagne ano, bronze ano, silver bronze ano – achieved by anodization, and two additional colours, powder painted black and white structure. All variants have a matte black back side.

Quality lens and light

Minude's light quality will not be outshined by its minimalist design, however. Its beautifully concentrated light beam projected from a deep-recessed LED light source, provides a pleasant light output. Its sophisticated lens technology is well protected by the inner edge snuggling right up to the glass lens.

versions	<i>semi-recessed semi-recessed suspension track 48V 1L/2L & track 48V suspension jack & jack suspension</i>
colours	<i>anodized black, anodized bronze, anodized champagne, anodized silver bronze, black struc, white struc</i>
output*	<i>686lm – 8.1W</i>
cct	<i>2700K, 3000K</i>
cri	<i>90+</i>
optics	<i>30°</i>
dimming	<i>trailing edge, 1-10V, pushdim, dali (GE)</i>
adjustability	<i>h 360° v 90°</i>
-	
more info?	<i>supermodular.com/en/minude</i>

*output for white struc, 3000K, 30°



MINUDE 45 ADJUSTABLE SEMI-RECESSED - ANODIZED CHAMPAGNE



MINUDE 45 ADJUSTABLE SEMI-RECESSED - ANODIZED BRONZE



MINUDE 45 ADJUSTABLE JACK - SILVER BRONZE
CEILING BASE FOR 2X JACK



MINUDE 45 ADJUSTABLE TRACK 48V - ANODIZED BRONZE



MINUDE 45 ADJUSTABLE TRACK 48V 2X - WHITE STRUC



MINUDE 45 SUSPENSION TRACK 48V - ANODIZED BLACK



MINUDE 45 SUSPENSION - ANODIZED BRONZE



MINUDE 45 SUSPENSION - ANODIZED CHAMPAGNE



MINUDE 45 SUSPENSION - ANODIZED SILVER BRONZE



MINUDE SEMI-RECESSED, THIMBLE, MINUDE TRACK, PISTA TRACK RECESSED PROFILE
OFFICE CHRISTOPHE COLPAERT, KNOKKE (BE)
DE MAATWERKER



MINUDE SUSPENSION
PRIVATE RESIDENCE, STOCKHOLM (SE)



MINUDE SEMI-RECESSED
CAFE DES ARTS, NANCY (FR)
JEAN LUC HEMMER



MINUDE SEMI-RECESSED
PRIVATE RESIDENCE, ANTWERPEN (BE)

the chosen ones

MINUDE





the chosen ones

MINUDE

MINUDE TRACK, PISTA LINEAR SPOTS 16X, PISTA TRACK RECESSED FLANGE PROFILE
PRIVATE RESIDENCE, STOCKHOLM (SE)



THIMBLE 74 - ANODIZED CHAMPAGNE



THIMBLE 70 TRIMLESS - ANODIZED BRONZE



THIMBLE

Design — Jeffrey Huyghe

Thimble evokes minimalism, surprise and technology all at once. Subtle curves, slightly revealing colours if desirable, high-quality lens and LED. For high-end residential or hospitality settings. This versatile, elegant architectural downlighter will bring pure design, sophistication and definition to any space without stealing all the attention.

Bare essentials reveal a sophisticated design

Thimble's composition emphasizes that elegance lies in pure form. A minimalistic, curved design, with a deep-recessed and glare-free light source. Thimble's clean, ultra-thin flange or trimless execution will go unseen in the quietest of spaces.

A low-key execution with a little more

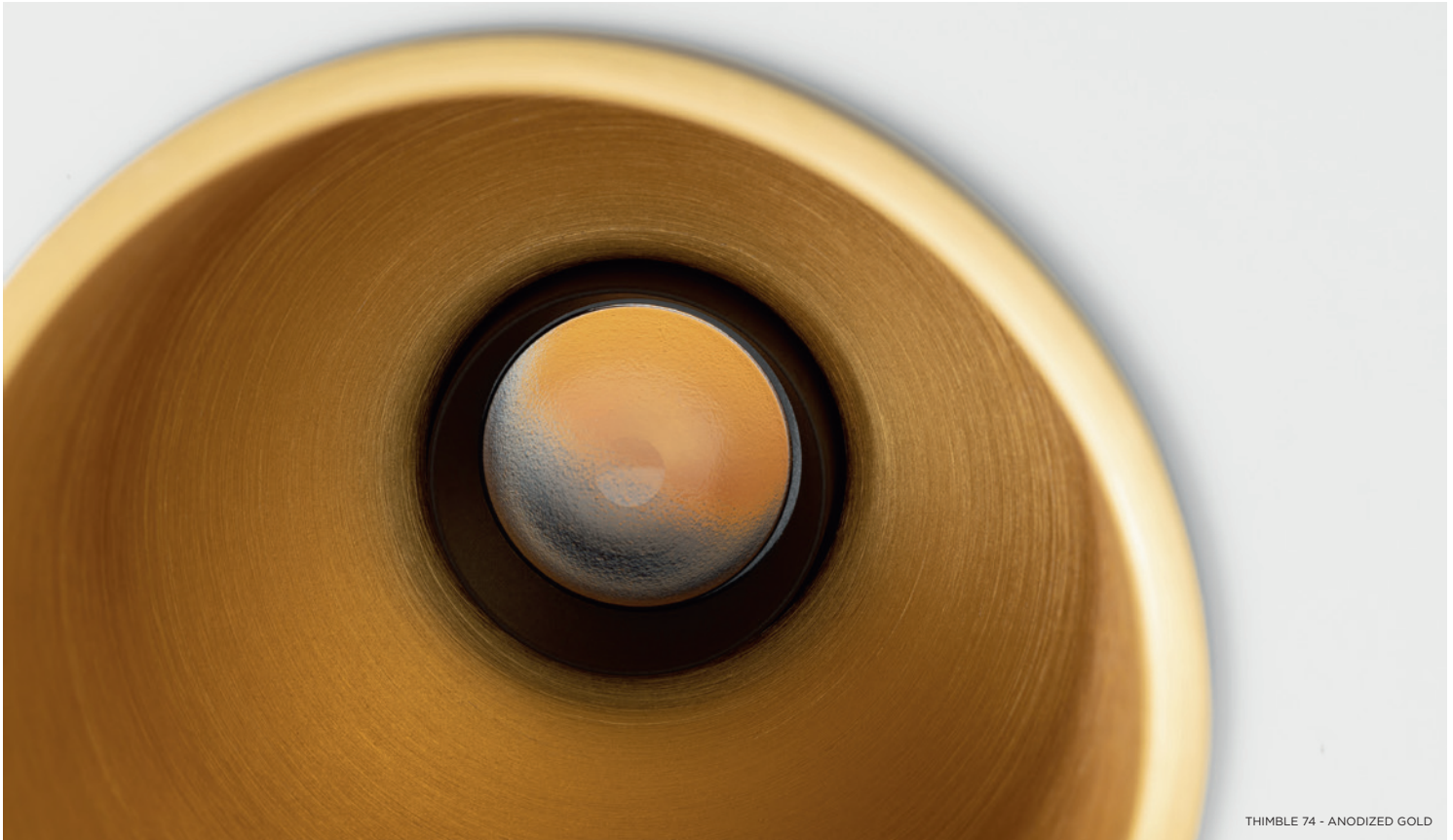
For light expressions that should be discreet but show that little extra, designers can find the perfect compromise with Thimble's long list of anodized colours. This desired, enhanced effect can be created on any ceiling application.

versions	<i>fix & adjustable trim & trimless</i>
colours	<i>ano black, ano bronze, ano champagne, ano gold, ano silver bronze, black struc, white struc</i>
output*	<i>667lm – 8.1W</i>
cct	<i>2700K, 3000K</i>
cri	<i>90+</i>
beam angle	<i>30°</i>
adjustability	<i>h 360° v 30° (adjustable version)</i>
dimming	<i>trailing edge, 1-10V, pushdim, dali (GE)</i>
-	
more info?	<i>supermodular.com/en/thimble</i>

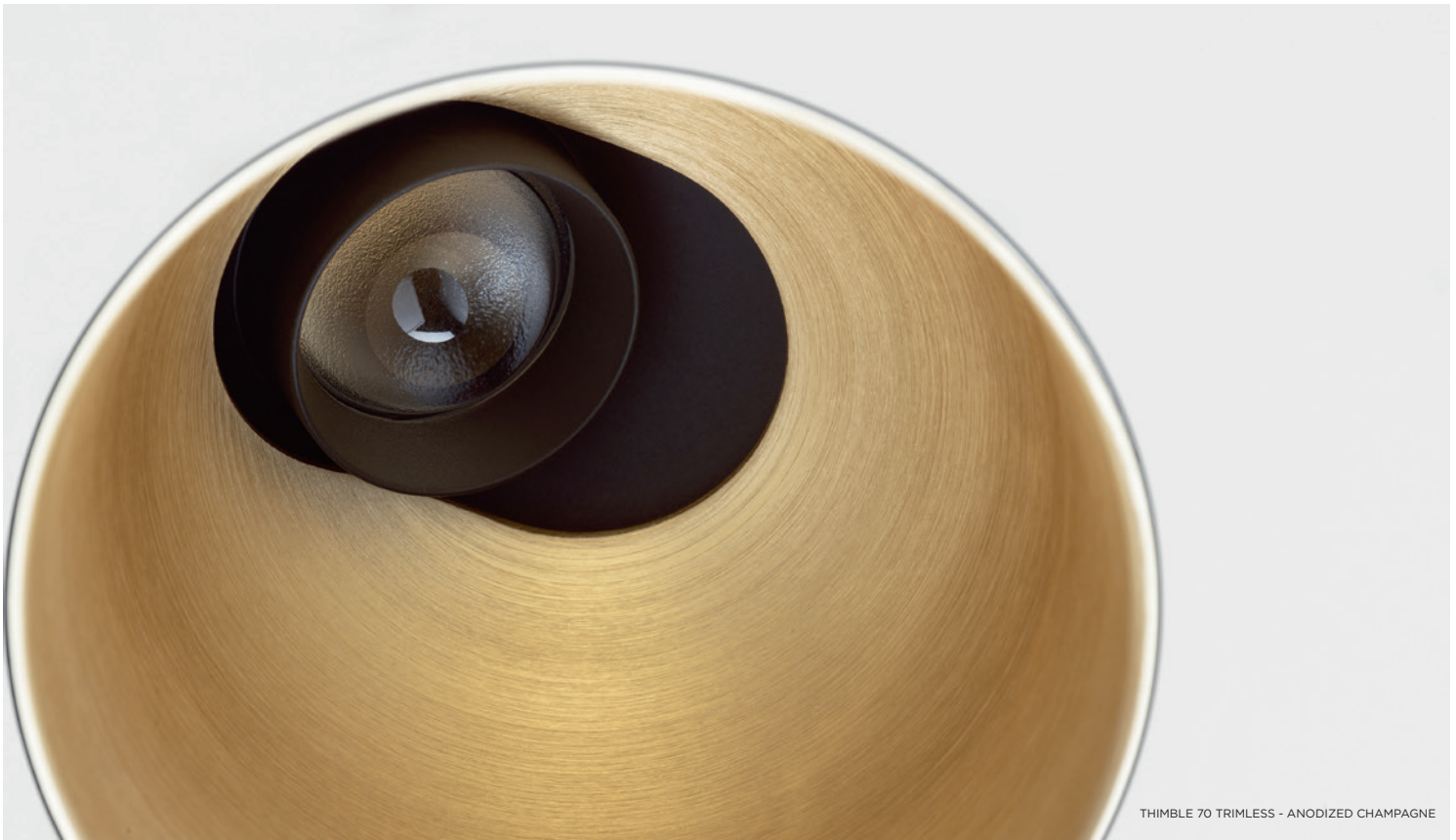
*output for white struc, 3000K, 30°



THIMBLE 74 - BLACK STRUC
THIMBLE 74 - WHITE STRUC
THIMBLE 74 - ANODIZED SILVER BRONZE
THIMBLE 74 - ANODIZED CHAMPAGNE
THIMBLE 74 - ANODIZED GOLD
THIMBLE 74 - ANODIZED BRONZE
THIMBLE 74 - ANODIZED BLACK



THIMBLE 74 - ANODIZED GOLD



THIMBLE 70 TRIMLESS - ANODIZED CHAMPAGNE





the chosen ones

THIMBLE

THIMBLE
PRIVATE RESIDENCE, ZUIDSCHOTE (BE)





THIMBLE 70 TRIMLESS ADJUSTABLE - ANODIZED GOLD



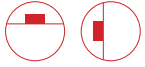
THIMBLE 74 - ANODIZED BLACK



PUPIL



PUPIL
K72
K-SET 72



K & PUPIL*

*Design — Bleijh

versions	fix (K72) & adjustable (Pupil, K77)
accessory	K-set
colours	black struc, white struc, donkey grey struc (K72/K77 only)
output*	Pupil: 478lm – 6.4W K72: 714lm – 9.2W K77: 714lm – 9.2W
cct	2700K, 3000K, 1800K-3000K (warm dim)
cri	90+
optics	25°, 40°
dimming	trailing edge, 1-10V, pushdim, dali (GE)
adjustability	h 360° v 60° (Pupil) h 360° v 30° (K77)
-	
more info?	supermodular.com/en/pupil supermodular.com/en/k72 supermodular.com/en/k77-adjustable supermodular.com/en/k-set

*output for white struc, 3000K, 25°

Nothing short of the unexpected, Pupil is full of surprises and contradictions. Using nature as his muse, Dutch designer Basten Leijh created this organic, quirky shape: the downlighter that does the opposite. And there's more contradiction than meets the eye. Pupil doesn't blend, but fits right in. A perfect match with our K family member, K-set 72. How's that for modular?

Standing out

Small and curvy, the oval shape ends abruptly, cut off at an angle. An organic design inspired by the curious eyes of a crab; Pupil is not for a discreet expression. The unexpected direction of the light beam will grab attention. For a light beam pointing straight down, tilt the housing slightly up. For a 30° beam angle, point the housing straight down. Tilt the body 30°, and you have 60° light orientability for a wall-wash effect.

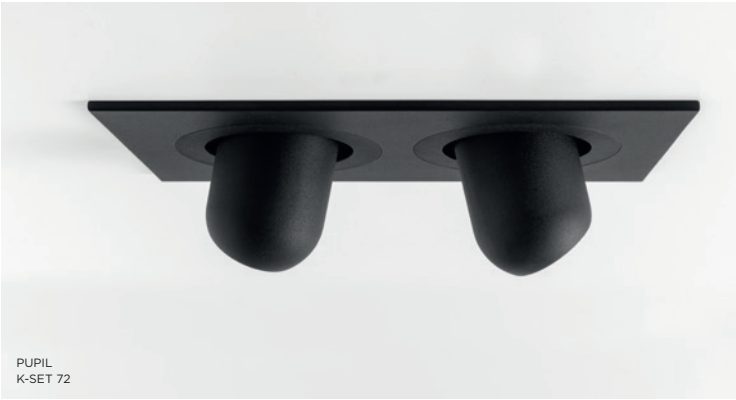
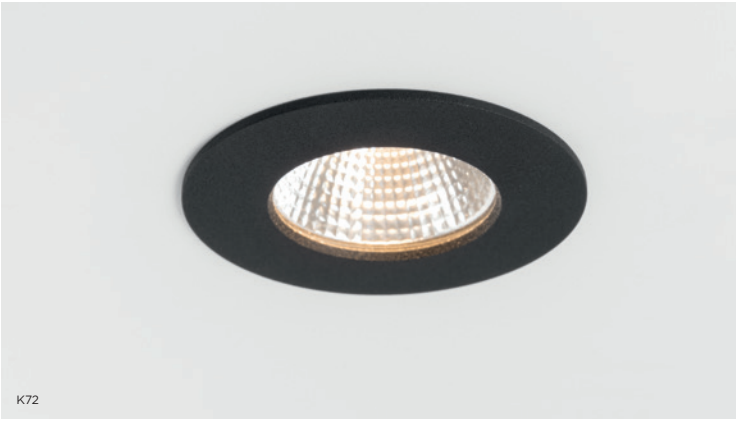
Fitting in

Just as this new design fits perfectly with the miniaturization trend, Pupil fits right in the palm of your hand. Pupil's playful design is additionally complemented by a brilliant show of modularity. It works wonders with our established, iconic K family, our first-ever adventure into technical architectural lighting. Thanks to K-set 72's openings, Pupil settles in snugly inside as alternative to a K-72 spot. Or, a duo, trio or even a quartet of Pupils, all in one plate!

Combining contradictions

Bring an extra touch of fun to a K family picnic. Create an installation of 2x, 3x, or 4x recessed K72 downlighters combined with playful Pupils sticking out of the ceiling. By pairing Pupil with spots, you can create a new fixture with both fixed and adjustable light sources and illuminate special places in high-end residences, hospitality environments and small boutiques. With K-set, or as standalone, Pupil's gear is recessed in the ceiling. Nothing but an inquisitive little eye will radiate warm light.











PUPIL



PUPIL









MARBUL SUSPENSION
THE CENTURY HASSELT (BE)
SCHEVENELS INTERIEUR



HENRY VAN
DE VELDE
AWARDS 19
WINNER



MARBUL

Design — Jeffrey Huyghe

Marbul is an ideal choice for both residential and hospitality projects. Direct light with a simple twist of the lamp units, each with its own dedicated LED module. The elegant wall and ceiling luminaire presents a re-engineered design. With Marbul also available for our Pista 48V track system, the family is getting happier and warmer. All Marbuls include the option to interchange magnetic reflectors in aluminium, champagne or gold colours. Add warm dim technology to fine tune the mood even more.

Asymmetry rules

The elegant surface-mounted luminaires enable you to direct light with a simple twist of each lamp unit. Thanks to Marbul's streamlined driver box, the 1, 2 or 3 spheres appear to float against the ceiling. The unique magnetic coverplate keeps screws and wires neatly out of sight.

All-round sophistication

Marbul recessed is characterized by a thin trim of 5mm through which 1 or 2 spheres appear to hang gently from the ceiling without any visible attachments. Adjustability remains the same: lamp units can be rotated 360° and inclined approximately 45°.

Adding more dynamism to an original

Marbul suspension comes with a particularly thin, matte black cable and a fixed or adjustable sphere. Choose a gold, champagne or aluminium reflector to pimp your desired light effect. The adjustable version features a small cap that can be used to incline the sphere by approximately 45° to highlight specific elements in a room, and the cable itself can be rotated around 360°.

versions	<i>recessed - 1L, 2L surface - 1L, 2L, 3L suspended - 1L track 48V surface/suspended - 1L to be combined with magnetic reflector</i>
colours	<i>black struc, donkey grey struc, white struc</i>
output*	<i>748lm – 9.3W (per lamp unit)</i>
cct	<i>2700K, 3000K</i>
cri	<i>90+</i>
optics	<i>10°, 25°, 40°</i>
dimming	<i>trailing edge, 1-10V, pushdim, dali (GI/GE)</i>
adjustability	<i>h 360° v 45°</i>
-	
more info?	<i>supermodular.com/en/marbul supermodular.com/en/marbul-recessed supermodular.com/en/marbul-suspension</i>

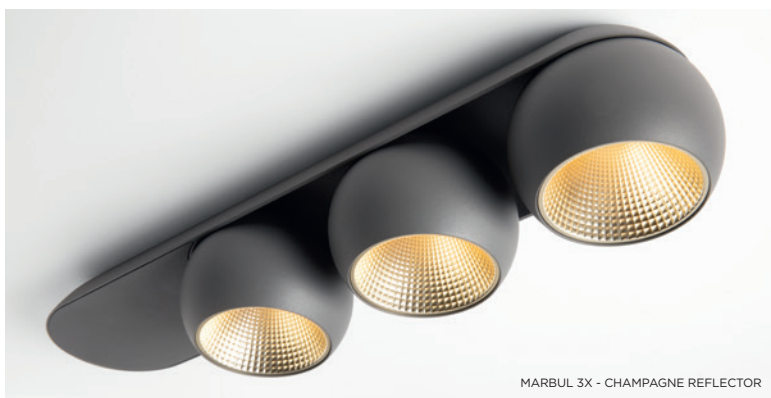
*output for white struc, 3000K, 25°



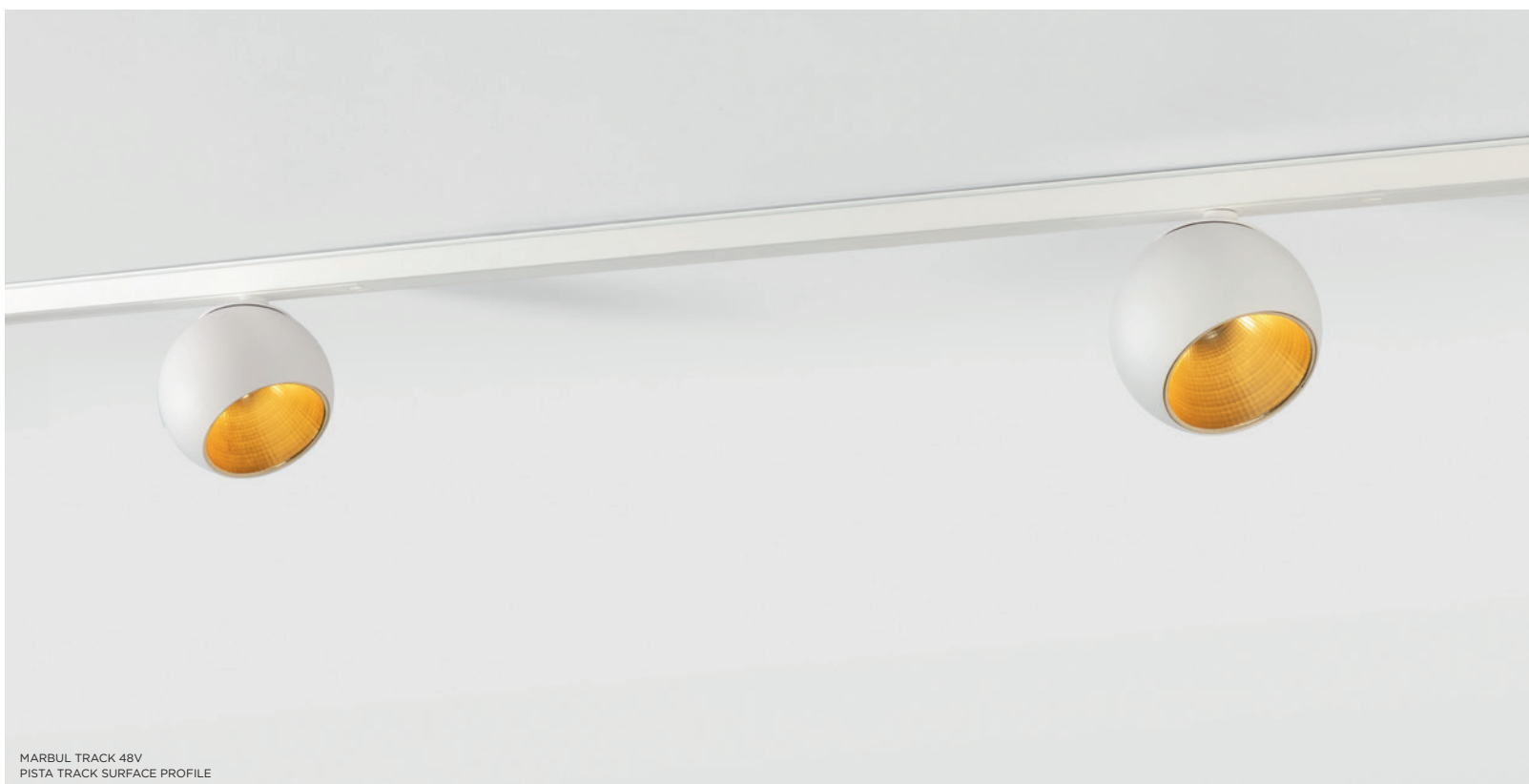
MARBUL 1X - ALU REFLECTOR



MARBUL 2X - GOLD REFLECTOR



MARBUL 3X - CHAMPAGNE REFLECTOR



MARBUL TRACK 48V
PISTA TRACK SURFACE PROFILE





MARBUL RECESSED
PRIVATE RESIDENCE, IZEGEM (BE)





MARBUL SUSPENSION ADJUSTABLE
PRIVATE RESIDENCE, WERVIK (BE)



the chosen ones

MARBUL

MARBUL SUSPENSION
BUSINESS TERMINAL AIRPORT, OOSTENDE (BE)
JUNO ARCHITECTEN, LIBBRECHT TECHNICS



MARBUL RECESSED
CHECKPOINT, MOL (BE)



the chosen ones

MARBUL

MARBUL TRACK, MARBUL SUSPENSION ADJUSTABLE TRACK, PISTA TRACK RECESSED FLANGE PROFILE
PRIVATE RESIDENCE, NICE (FR)



MARBUL RECESSED
PRIVATE RESIDENCE, LISSEWEGE (BE)





SEMIH 86



SEMIH 61



SEMIH

Design — Jeffrey Huyghe

versions	2 sizes: 61mm, 86mm surface mounted track 230V (61mm) to be combined with magnetic reflector (61mm)
colours	black struc, white struc
output*	61mm: 704lm – 11W 86mm: 1520lm – 19W
cct	2700K, 3000K, 1800K-3000K (warm dim)
cri	90+
optics	15°, 25°, 40°
dimming	trailing edge, 1-10V/pushdim, dali (GI)
adjustability	h 355° v 70°
-	
more info?	supermodular.com/en/semih supermodular.com/en/semih-61

*output for white struc, 3000K, 25°

Inspired by the yin-yang symbol, a sinuous 2mm S-shaped line divides Semih in two equal, complementary parts: the hard, solid part mounted to the ceiling and the soft, round lamp housing emitting light. Semih is exceptionally easy to install, thanks to strong mounting magnets. Now in two sizes, Semih is an award-winning luminaire with positive, directed energy.

Flexibility par excellence

Semih's flexibility is an integral part of its design. Closed, a sober downlighter with an air of mystery. As the bottom part slowly twists open, it reveals a soft light that flows with movement illuminating the surroundings. Turn it horizontally up to 355°, and tilt it vertically up to 70° on either side. Highlight objects that tell a story or special places that tell a dream.

Two sizes, many spaces

Semih comes in two sizes, ø86 and ø61. The original Semih, whose size and performing light were originally designed for multifunctionality in retail and hospitality, offers various types of light accents. Semih 61's application opens itself further to residential settings and small boutiques, where more subtle lighting is suitable. Thanks to a powerful magnetic plate in the ceiling, installation is clean and easy, without any visible screws. Semih 61 also fits on our 230V track rail system.

Installation made easy

Installing Semih is a breeze, requiring no visible screws. Just mount the ceiling panel to the ceiling and let the powerful magnets do their job. The reflectors, too, are clicked on a magnetic inner panel, facilitating replacement. What's more, as all the gear is integrated into the fixture, Semih can be smoothly connected to a 230V standard wiring during renovation works.



SEMIH 61 TRACK WITH LENS
PRIVATE RESIDENCE, MERCHTEM (BE)





SEMIH 86, MINUDE TRACK, PISTA LINEAR LED, PISTA TRACK SURFACE PROFILE
OFFICE INTERIORWORKS, AMSTERDAM (NL)
INTERIORWORKS



SEMIH 86
PRIVATE RESIDENCE, LILLE (FR)
SUPERSTANE



SEMIH 61 TRACK, SLD50
STEELDUXX, ANTWERP (BE)
SONAR INTERIOR ARCHITECTURE

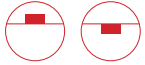


the chosen ones

SEMIH



EDUARD JONCK
GBL, KORTRIJK (BE)
GBL STUDIO



MEDARD

Design — Bleijh

It's the stick insect that inspired the Dutch design agency Bleijh for the creation of Médard. Highly flexible thanks to its orientable head, Médard can sit still as a standalone on a desk, or on the ceiling. In its miniature form, it looks graceful on its own, on a ceiling or as part of our Pista track or our redesigned Modupoint LED jack system. Médard even comes with a stretched neck supporting 1 or 2 light units.

Table, ceiling, wall or track?

First, it was one sleek design. Modularity and fun ensued. From a table lamp, to more subtle surface-mounted and recessed ceiling applications. Add lovely wall versions and a playful track variant, or plug it in our easy-to-install Modupoint ceiling base with or without extender sticks, and you've got yourself full-blown modularity.

Matching sizes, matching rings

Médard 42 is the minimalistic member of the family, gracing walls or ceilings as a standalone, or sliding playfully as a smaller spot for our Pista track (48V) and our redesigned Modupoint. Médard 70 is a solid eye-catcher as a track spot (230V). And of equal diameter, Médard ceiling beautifies spaces as a surface-mounted and recessed luminaire.

More lights, more spaces

Médard opens itself up to welcome more light. Médard stretched comes in two adjustable tube lengths: 300mm and 500mm and can support two light units. What's the opposite of stretched? Médard's distinctive and charming rounded edge is all you see with Médard recessed (ø42 and ø70). The matte black inner ring, same in all variants, combats glare and promotes a homogenous look.

versions	desk surface mounted semi-recessed (stretched) recessed track 48V & track 230V jack
colours	black struc, white struc
output*	42: 948lm – 11.5W 70: 1261lm – 16.2W
cct	2700K, 3000K
cri	90+
optics	25°, 40°
dimming	trailing edge, 1-10V, pushdim, dali (GI/GE)
adjustability	h 355° v 360° (not for Médard recessed)
-	
more info?	supermodular.com/en/medard

*output for white struc, 3000K, 25°



MEDARD 42 TRACK 48V



MEDARD 70 TRACK 230V



MEDARD 70 RECESSED



MEDARD 42 RECESSED



MEDARD 42 JACK
CEILING BASE FOR 3X JACK
MODUPOINT LED STICK 10CM



MEDARD 42 SEMI-RECESSED



MEDARD 70 STRETCHED SEMI-RECESSED 2X



MEDARD 70



MEDARD 70 STRETCHED



MEDARD 42 TRACK, PISTA LINEAR LED, PISTA TRACK SURFACE PROFILE, SMART LOTIS
CHECKPOINT, MOL (BE)





MEDARD 70 TRACK
SCHOENEN CHLOE, BILZEN (BE)
IN-LIJN INTERIEURARCHITECTUUR



the chosen ones

MEDARD

MEDARD 70 STRETCHED
RESTAURANT, HILTON HOTEL MUNICH AIRPORT, MUNICH, DE
RAWLE DESIGN



MEDARD
PRIVATE RESIDENCE, KORTRIJK (BE)



MEDARD 70 TRACK
BINST ARCHITECTS, ANTWERP (BE)
BINST ARCHITECTS



QBINI SURFACE BOX
PRIVATE RESIDENCE, ROTTERDAM (NL)



QBINI

Design — Florent Courier

versions	1L, 2L, 3L, 4L fix or adjustable to be combined with Qbini (trimless) frame or Qbini surface box
colours	black struc, gold, white struc
output*	424lm – 4.3W (per lamp unit)
cct	2700K, 3000K, 4000K 1800K-3000K (warm dim)
cri	90+
optics	25°, 40°
dimming	trailing edge, 1-10V, pushdim, dali (GE)
adjustability	h 350° v -30°/+30° (Qbini adj.)
ip	55
-	
more info?	supermodular.com/en/qbini supermodular.com/en/qbini-frame supermodular.com/en/qbini-trimless-frame supermodular.com/en/qbini-surface-box

*output for white struc, 3000K, 25°

A portmanteau of ‘cubic’ and ‘mini’, Qbini introduces modular, miniature, recessed LED lighting solutions to residential and hospitality venues and boutiques. Qbini allows to effortlessly express a unique lighting concept in every project. Available in a load of shapes, frames, colours and accessories, Qbini combines choice with exclusive design and high-quality lighting technology.

Small in size, great in light quality

Our smallest recessed portfolio at 44mm square, Qbini’s patented press-in, press-out technology makes installation simple, no screws required. Despite being sources of illumination, each Qbini unit has a tactile, precisely-machined appeal that fits in the palm of the hand.

Endless combinations

Qbini can be combined with 2 different frames: with or without a trim. Both of them are available in 1x, 2x, 3x or 4x lamp configurations. Its new surface box gives you even more choice! Mix, match and create your preferred configuration.

Patented precision

Qbini’s patented press-in, press-out technology makes it a breeze to install. The family’s small size, cutting-edge design and dual positioning options (recessed or deep recessed) add a modern yet cosy touch to any intimate space.



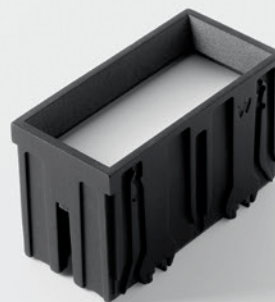
QBINI SQUARE IN
QBINI SQUARE OUT
QBINI SQUARE TAPERED
QBINI ROUND TAPERED
QBINI ROUND OUT
QBINI ROUND IN



QBINI ASY



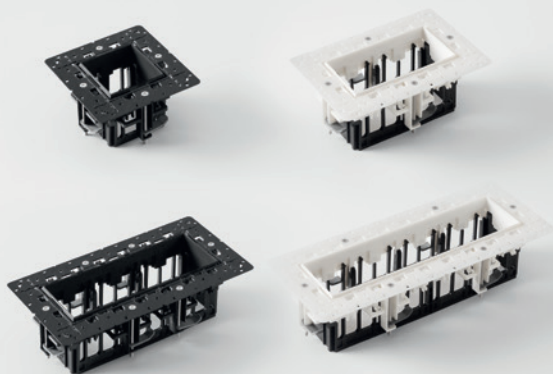
QBINI ADJUSTABLE



QBINI GENERAL



QBINI FRAME



QBINI TRIMLESS FRAME



QBINI SURFACE BOX











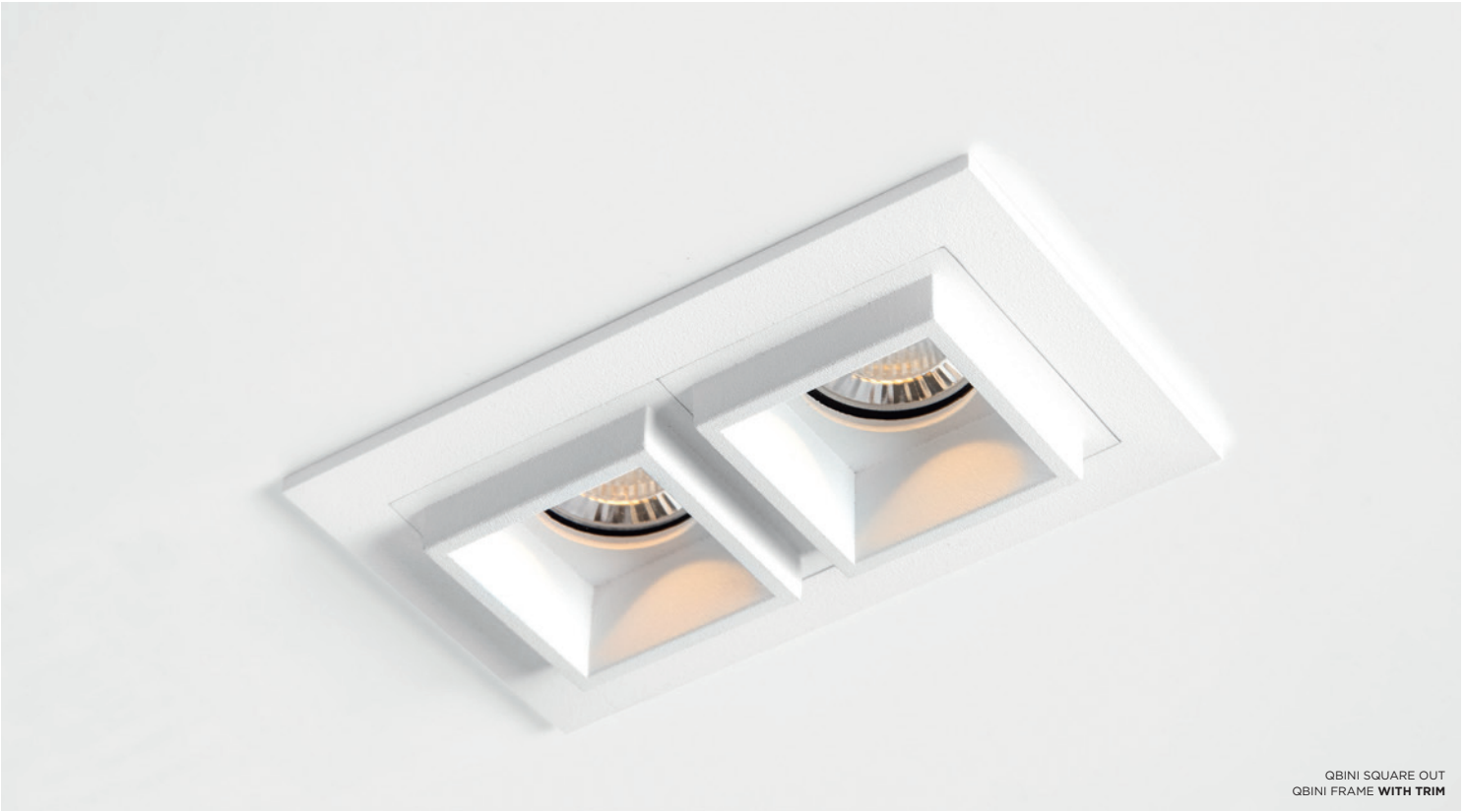


QBINI SURFACE BOX
PRIVATE RESIDENCE, ROTTERDAM (NL)





QBINI, QBINI TRIMLESS, SMART KUP 48, SMART TUBED WALL
LE CERISIER, LILLE (FR)



QBINI SQUARE OUT
QBINI FRAME **WITH TRIM**



QBINI SQUARE OUT
QBINI FRAME **TRIMLESS**





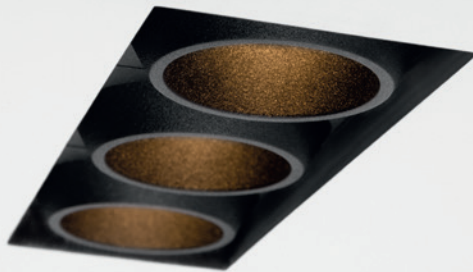
Patented precision

Qbini's patented press-in, press-out technology makes installation simple, no screws required.

The portfolio's small size, cutting-edge design and dual positioning options (recessed or deep recessed) add a modern yet cosy touch to any intimate space.



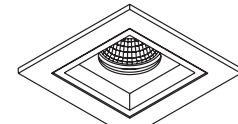
QBINI ADJUSTABLE (DEEP RECESSED)
QBINI FRAME



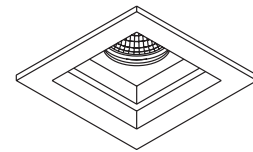
QBINI ROUND TAPERED (DEEP RECESSED)
QBINI TRIMLESS FRAME



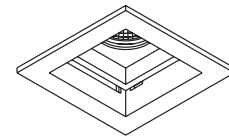
QBINI GENERAL (DEEP RECESSED)
QBINI SURFACE BOX



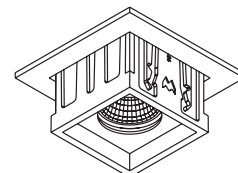
PUSH
first position



PUSH
second position



PUSH
release



PULL
remove



QBINI SQUARE IN
QBINI FRAME



QBINI SQUARE IN (DEEP RECESSED)
QBINI FRAME







QBINI ROUND IN
QBINI SURFACE BOX



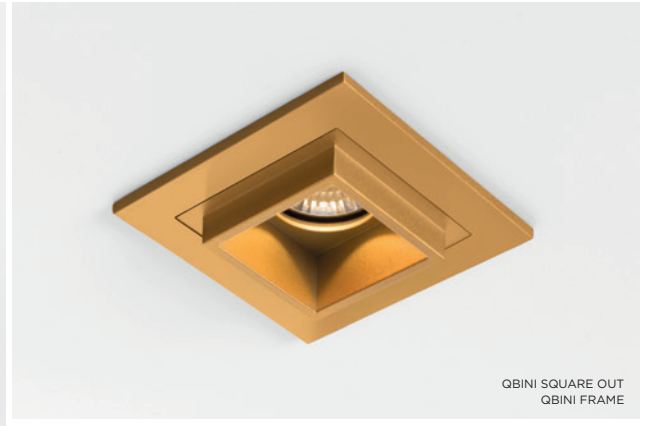
QBINI GENERAL
QBINI SURFACE BOX



QBINI ROUND IN
QBINI SURFACE BOX



QBINI ASY
QBINI FRAME



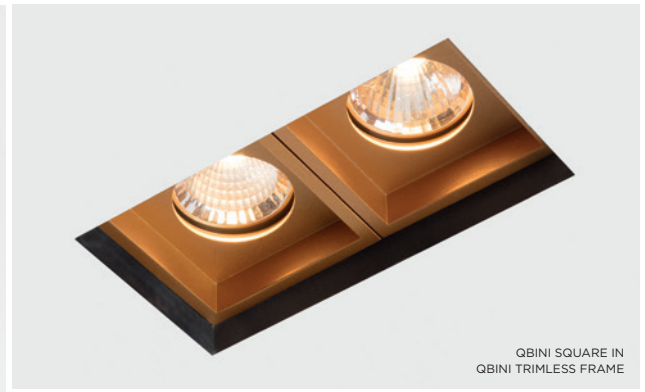
QBINI SQUARE OUT
QBINI FRAME



QBINI ADJUSTABLE
QBINI FRAME



QBINI ROUND IN
QBINI BLIND COVER
QBINI TRIMLESS FRAME



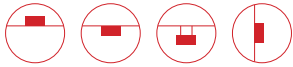
QBINI SQUARE IN
QBINI TRIMLESS FRAME



QBINI ROUND IN
QBINI ADJUSTABLE
QBINI TRIMLESS FRAME



SMART LOTIS ADJUSTABLE WITH SMART SURFACE TUBED
PRIVATE RESIDENCE, WERVIK (BE)



SMART

versions	3 designs: Cake, Kup, Lotis - fixed & adjustable 4 sizes: ø48, 82, 115 & 160mm
accessories	mask - 1L, 2L surface box - 1L, 2L surface and suspended tube - 1L wall tube - 1L, 2L ball - 1L
colours	black struc, gold, white struc, alu brushed
output*	48: up to 303lm - 4.3W 82: up to 994lm - 13.4W 115: up to 1908lm - 23.6W 160: up to 4721lm - 49.7W
cct	2700K, 3000K, 3500K, 4000K, 1800K-3000K (warm dim)
cri	90+
optics	15°, 25°, 40°
power supply	350mA, 500mA, 700mA, 900mA, 1050mA, 1200mA, 1400mA (depending Smart type)
dimming	trailing edge, 1-10V, pushdim, dali (GE)
adjustability	h 355° v 25° (Smart adj.)
ip	20 & 55
-	
more info?	supermodular.com/en/smart-cake supermodular.com/en/smart-kup supermodular.com/en/smart-lotis

*output for white struc, 3000K, 25°

Designers can stay up all night trying all sorts of things with Smart, Modular's most versatile range of architectural lighting. Mix and match, from a mosaic of shapes, sizes, colours and mounting options, and create a playful installation while maintaining a consistent look and feel. The Smart choice for any application.

3 designs that multiply

Smart's 3 designs are already a party for designers. Fun, curvy shapes, small and charming. Double the fun, Lotis, Cake and Kup come in fixed and adjustable versions. Adding colour to double fun, all variations are available in black structure, white structure and a warm, golden finish, and can further be combined with all Smart accessories. How's that for a party?

Limitless combinations

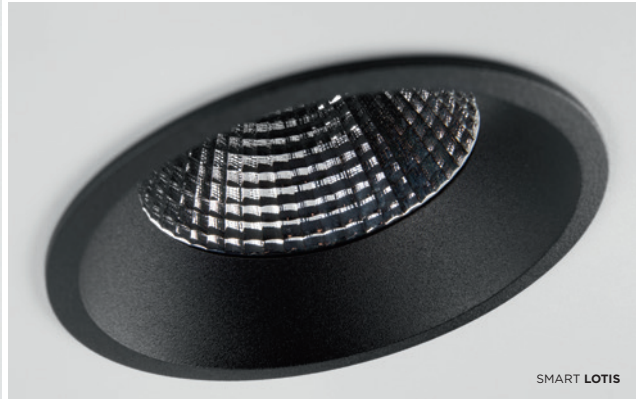
A list of accessories lets you play with shapes and depth. Smart mask is the opportunity to play with round lights surrounded by a square or rectangular shape. Smart box adds dimension by protruding from the ceiling, hugging any of the 3 designs in any of 3 the colours. Smart tubed, suspended, surface-mounted on the wall or ceiling, gives depths to the circular design, emitting down/up light. Smart tubed 82 slides in elegantly as one of our newest accessories for our 230V track rail system.

Join the ball

The accessories list marches on. The latest, Smart ball, flaunts a bubbly, spherical shape, available in two sizes: Smart ball 82 and Smart ball 115. In white or black structure, it hangs gracefully from a thin matte black suspension cable. As with the other accessories, combine Smart ball with a differently coloured light in any of the 3 designs, for a little contrast and fun.



SMART LOTIS
LOFT BRITSELEI, ANTWERP (BE)





SMART CAKE ADJUSTABLE WITH SMART MASK
PRIVATE RESIDENCE, MARKE (BE)
AAVO ARCHITECTEN



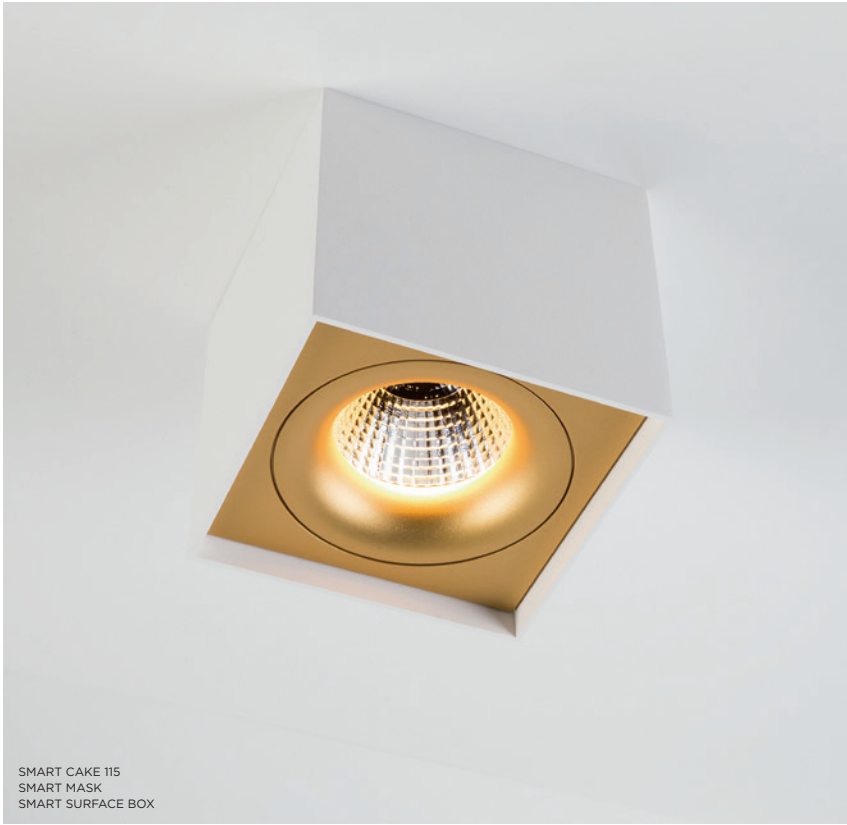
SMART CAKE 115
SMART MASK



SMART KUP 115 ADJUSTABLE
SMART MASK



SMART LOTIS WITH SMART SURFACE BOX
BINST ARCHITECTS, ANTWERP (BE)
BINST ARCHITECTS





SMART KUP WITH SMART SURFACE TUBED SUSPENSION
OFFICE, ANTWERP (BE)





SMART KUP WITH SMART TUBED WALL
PRIVATE RESIDENCE, GEES (NL)
HEYLIGERS DESIGN + PROJECTS



SMART LOTIS 82
SMART TUBED WALL



SMART LOTIS 82
SMART TUBED WALL



SMART CAKE 82 ADJUSTABLE
SMART TUBED WALL



SMART LOTIS 82
SMART TUBED WALL



SMART CAKE 82 ADJUSTABLE
SMART TUBED WALL



SMART KUP WITH SMART BALL SUSPENSION
PRIVATE RESIDENCE, ASTENE (BE)





SMART LOTIS WITH SMART TUBED WALL
PRIVATE RESIDENCE, ROTTERDAM (NL)
DOEN



SMART KUP WITH SMART TUBED WALL
PRIVATE RESIDENCE, GEES (NL)
HEYLIGERS DESIGN + PROJECTS



SMART LOTIS ADJUSTABLE
PRIVATE RESIDENCE, VOORBURG (NL)
STRANDNL



SMART KUP WITH SMART SURFACE TUBED
PRIVATE RESIDENCE, SCHILDE (BE)
BERT HERMANS



the chosen ones

SMART

SMART LOTIS
MOLLIE PAYMENTS, AMSTERDAM (NL)
HEYLIGERS DESIGN + PROJECTS



SMART KUP, SLD50
ZOUTMAN, ROESLARE (BE)
CAAN ARCHITECTEN



the chosen ones

SMART



PISTA LINEAR LED, PISTA LINEAR LED FLAPS, MINUDE ADJUSTABLE, MINUDE SUSPENSION
PRIVATE RESIDENCE, LOPPEM (BE)



PISTA

Pista is the ultimate in modern aesthetics, introducing thinner, slimmer magnetic track rails, even smaller light fixtures and ultra-thin cables. But Pista isn't just about miniaturization, it's also about personalization. Designers can create unique configurations and play with different modules on single or multiple track rails in different lengths, light effects and colours.

Functional LED, infinite lines

Different LED modules, entirely different effects. A beautiful general light line with a powerful lumen package. A subtle Night Light for pure design, and more ambient, intimate lighting. A surprising module flaunting a trail of tiny & impressive LED spots (8x, 16x), creating accents when desired. All modules can be integrated seamlessly, flush with the surface. Also, for a slight, glare reducing effect, a new linear module with thin flaps on either side can join your project.

One spot, two spots

Integrate dynamic accent lighting with linear LED by subtly inserting minimalist spots. Marbulito's lens gives a nice sharp round light contour, while Médard's reflector renders a softer circle of light. For more variation, both Marbulito & Médard are available as twin light units, decreasing the space between two lamps. Marbulito suspended is also available with a two-metre-long cable, for creative executions on high ceilings.

On track, on cable

Our beloved Smart 48 Tabled track and track-suspended can be combined with a 48V track adapter on the Pista rail track. Choose between Smart 48 and Smart 48+, and any of 3 light options: Cake, Kup or Lotis. Minude joins the party with its rich anodized colours. As a single 48V track spot or a twin lamp unit with phenomenal yogic flexibility, or as a suspended track spot, adding grace and dimension to your expression. Finally, Marbul for Pista enters the scene. With its bigger volume, Marbul enhances the presence of our slender 48V track system.

versions	LED linear / LED linear flaps: 500, 1000, 1500, 2000, 2500mm LED linear spots Marbul (suspension) Marbulito (suspension) Médard Minude (suspension) Smart surface tubed (suspension) 48
track profiles	surface, suspended (up/down), recessed (trimless/flange)
colours	black struc, white struc, anodized black, anodized bronze, anodized champagne, anodized silver bronze
output*	LED linear (1000mm): 1033lm – 17W LED linear flaps (1000mm): 1274lm – 17W LED linear spots: 796lm – 8W Marbulito: 332m – 6.5W Médard: 727lm – 10.5W Minude: 686lm – 10.5W
cct	2700K, 3000K, 1800K-3000K (warm dim)
cri	90+
dimming	1-10V, dali
-	
more info?	supermodular.com/en/pista-magnetic-track

*output for white struc, 3000K



MARBULITO TRACK 48V
PISTA TRACK RECESSED TRIMLESS PROFILE



MARBULITO TRACK 48V
PISTA TRACK RECESSED TRIMLESS PROFILE



MARBULITO TRACK 48V 2X
PISTA TRACK SURFACE PROFILE



MARBUL TRACK 48V
MARBUL SUSPENSION ADJUSTABLE TRACK 48V
PISTA TRACK SURFACE PROFILE





PISTA TRACK 48V LED LINEAR SPOTS 8x



PISTA TRACK 48V LED LINEAR SPOTS 16x





MARBUL TRACK, MARBUL SUSPENSION ADJUSTABLE TRACK
PRIVATE RESIDENCE, ZÜRICH (CH)



MARBUL SUSPENSION TRACK 48V
PISTA TRACK SURFACE PROFILE



MARBUL TRACK 48V
PISTA TRACK SURFACE PROFILE



MARBULITO, PISTA TRACK RECESSED PROFILE, SMART LOTIS
SHOWROOM KASTER KEUKENS, ROESLARE (BE)
KASTER KEUKENS



MARBULITO TRACK 48V
PISTA TRACK SURFACE PROFILE



MARBULITO TRACK 48V
PISTA TRACK 48V LINEAR LED
PISTA TRACK SURFACE PROFILE



PISTA LINEAR LED, MEDARD 42 TRACK, PISTA TRACK RECESSED FLANGE PROFILE
PRIVATE RESIDENCE, BERLIN (DE)







the chosen ones

PISTA — MINUDE

MINUDE TRACK, PISTA TRACK UP/DOWN PROFILE
PRIVATE RESIDENCE, GHENT (BE)



PISTA LINEAR LED, MINUDE SUSPENSION TRACK, PISTA TRACK SURFACE PROFILE, MINUDE
PRIVATE RESIDENCE, MERCHTEM (BE)



PISTA LINEAR SPOTS 8X, PISTA TRACK SURFACE PROFILE
PRIVATE RESIDENCE, LISSEWEGE (BE)



PISTA LINEAR LED, MEDARD TRACK, PISTA TRACK SURFACE PROFILE
WZC VOGELZANG, BRUGGE (BE)
BOECKX



the chosen ones

PISTA

MEDARD 42 TRACK, PISTA TRACK UP/DOWN PROFILE
PRIVATE RESIDENCE, BERLIN (DE)



PISTA LINEAR LED, MINUDE ADJUSTABLE, PISTA TRACK SURFACE PROFILE
PRIVATE RESIDENCE, MERELBEKE (BE)



the chosen ones

PISTA





REKTOR

REKTOR

Design — Couvreur & Devos

versions	<i>Rektor GI - 1L, 2L Rektor recessed GE</i>
colours	<i>Rektor GI: black struc-brushed alu, black struc-chrome, black struc-smoked bronze, black struc-black struc white struc-brushed alu, white struc-chrome, white struc-smoked bronze, white struc-white struc Rektor recessed: white struc, black struc</i>
output*	<i>1234lm – 16.25W (per lamp unit)</i>
cct	<i>2700K, 3000K, 3500K, 1800K-3000K (warm dim)</i>
cri	<i>90+</i>
optics	<i>25°, 40°</i>
dimming	<i>trailing edge, 1-10V, pushdim, dali (GE)</i>
adjustability	<i>h 360° v -90°/+90°</i>
-	

more info? supermodular.com/en/rektor

With a name derived from the Latin word for “ruler”, the Rektor range of LED lighting has every quality of a leader. Winner of the 2014 Henry Van de Velde design award, Rektor showcases the distinguished effects of right angles, accented light direction and no visible wires.

Hidden ingenuity

The unique feature of Rektor is that all the technical workings are concealed within the fixture. The innovative tilting technology allows you to rotate the LED head through 360°, as well as adjusting it upwards or downwards through 90°. All without a single wire being visible.

*output for white struc, 3000K, 25° (recessed)





REKTOR 1X BLACK STRUC - BRUSHED ALU



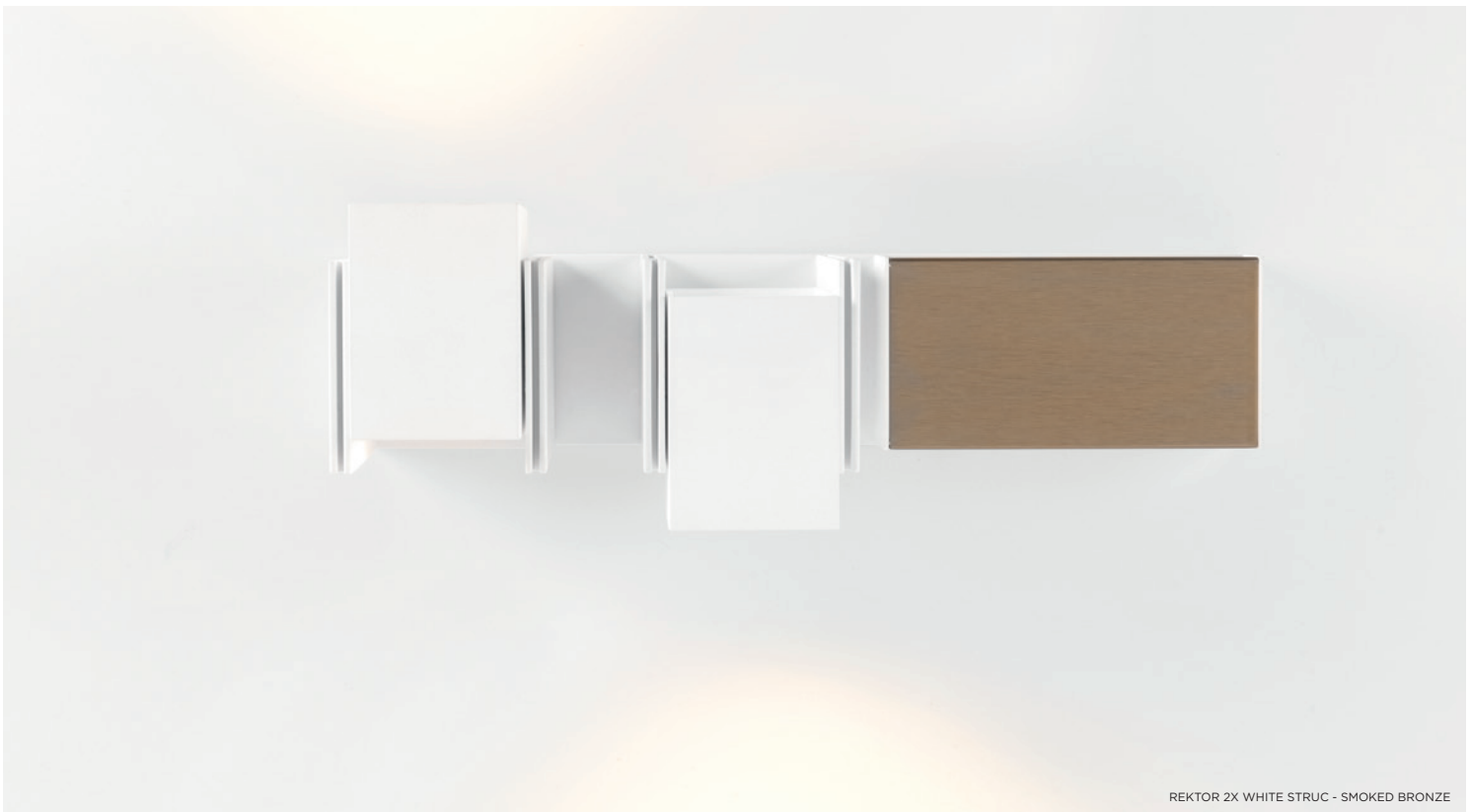
REKTOR 2X BLACK STRUC - BLACK STRUC



REKTOR
PRIVATE RESIDENCE, ENKHUIZEN (NL)
CLAIRZ INTERIOR DESIGN



REKTOR 2X WHITE STRUC - WHITE STRUC



REKTOR 2X WHITE STRUC - SMOKED BRONZE





FLAT MOON

Contemporary architectural projects love a minimalist, slim lighting design. Modular has risen to the challenge by developing a new proprietary LED PCB solution for a more homogeneous light surface. The first luminaire to integrate the new component is Flat moon, a stylish, reduced height fixture (78 mm) that distributes a soft, yet functional light. Office-compliant when combined with one of the prismatic diffusers, it is also a perfect fit for public spaces, hotels, restaurants or retail environments.

A piece of the night sky in your space

Bring the breath-taking subtlety of a lunar eclipse indoors – in the form of our Flat moon eclips lighting fixture. This enchanting ring-shaped luminaire distributes soft yet functional light. Flat moon eclips has a high, powerful lumen output, but less than the Flat moon. As it illuminates without overwhelming, Flat moon eclips is also suitable for residential spaces.

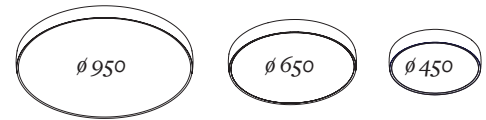
versions	3 sizes: 450/470, 650/670, 950/970 2 designs: Flat moon, Flat moon eclips
colours	black struc, white struc
output*	450/470: 2546lm – 29.4W 650/670: 6232lm – 62W 950/970: 13559lm – 129W
cct	2700K, 3000K, 4000K
cri	90+
dimming	1-10V/pushdim/dali (GI)
-	
more info?	supermodular.com/en/flat-moon supermodular.com/en/flat-moon-eclips

*output for Flat moon white struc, 3000K, downlight

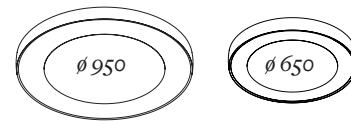
Exceptionally versatile

Flat moon can be either surface-mounted, recessed or suspended (with two types of suspension kits for either down or up/down lighter).

FLAT MOON



FLAT MOON ECLIPS



FLAT MOON 650 SURFACE



FLAT MOON 470 RECESSED



FLAT MOON 950 SUSPENSION WITH TRIANGLE CABLES



FLAT MOON ECLIPS 650 SURFACE



FLAT MOON ECLIPS 970 RECESSED



FLAT MOON ECLIPS 650 SUSPENSION WITH TRIANGLE CABLES



FLAT MOON
MEDIATHEQUE IMAGINE, MONTERBLANC (FR)
STUDIO 02 ARCHITECTES



FLAT-MOON
PROTEOR, DIJON (FR)
STUDIO MUSTARD

the chosen ones

FLAT MOON



FLAT MOON
CITY HALL, PLOMODIERN (FR)
STUDIO 02 ARCHITECTES



FLAT MOON ECLIPS
SISTEMA UFFICIO, ROME (IT)
INTERMARK SISTEMI



the chosen ones

FLAT MOON



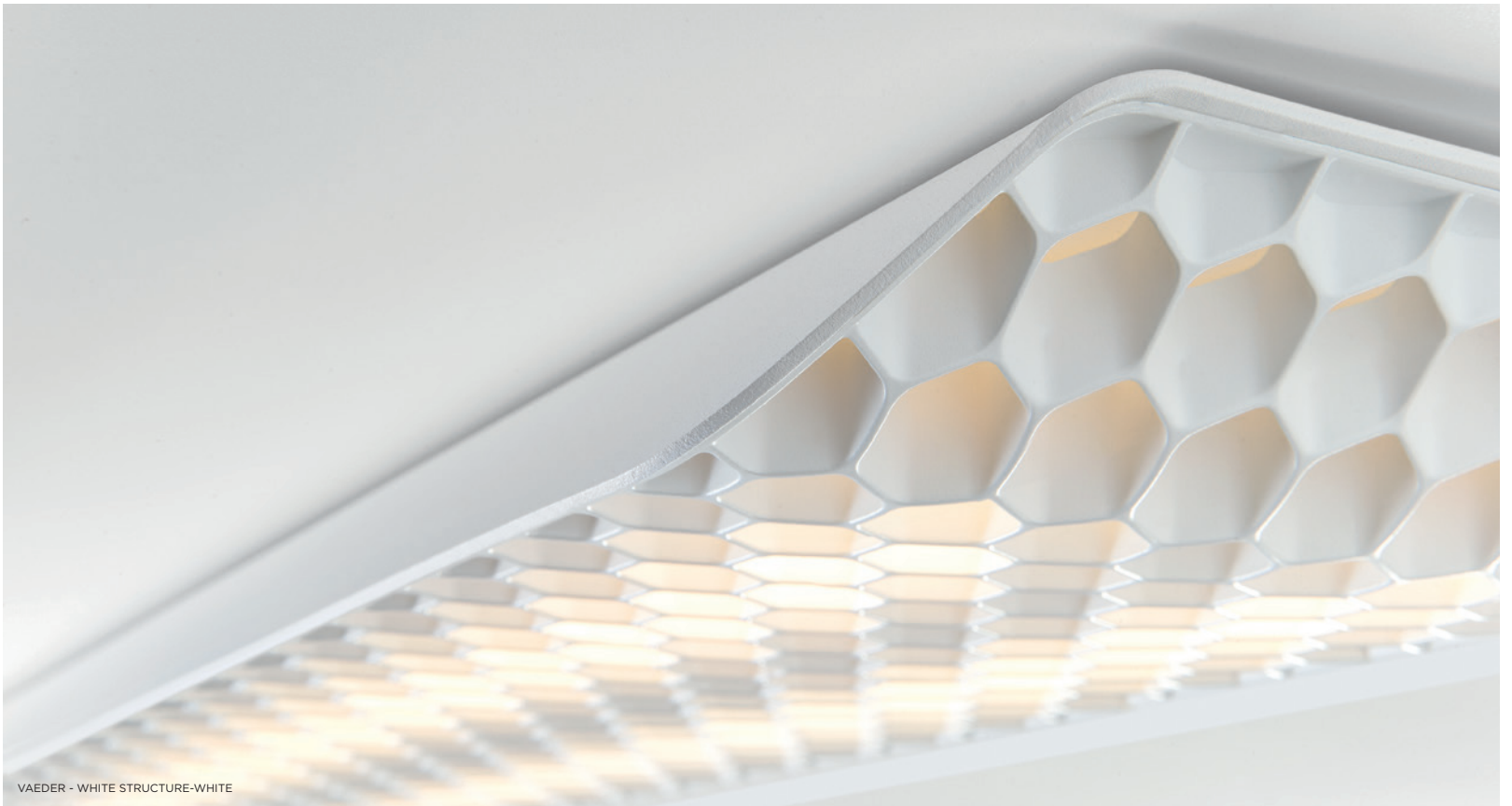




the chosen ones

FLAT MOON

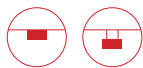
FLAT MOON
GBL, KORTRIJK (BE)
GBL STUDIO



VAEDER - WHITE STRUCTURE-WHITE



VAEDER SUSPENSION - DONKEY GREY STRUCTURE-WHITE



VAEDER

Design — Gerd Couckhuys

With a name derived from the English verb ‘to evade’, it is clear from the start that Vaeder will be miles ahead of anything average. This fixture feels equally at home in an energy-efficient, ergonomic office environment and in a home office. Its characteristic honeycomb structure in combination with a wafer-thin diffuser minimizes glare, whilst Vaeder’s ground-breaking LED technology results in an energy-efficient and high-performance office fixture.

Otherwordly

Vaeder can be supplied either surface-mounted or as a pendant. For surface mounting, it is positioned a small distance from the ceiling, which gives it a lighter look, as if floating against the ceiling. In its pendant version, Vaeder’s soft curves create a futuristic fixture that appears to be hovering out of another dimension. The fixture’s suspension height can be modified using a new adjuster system.

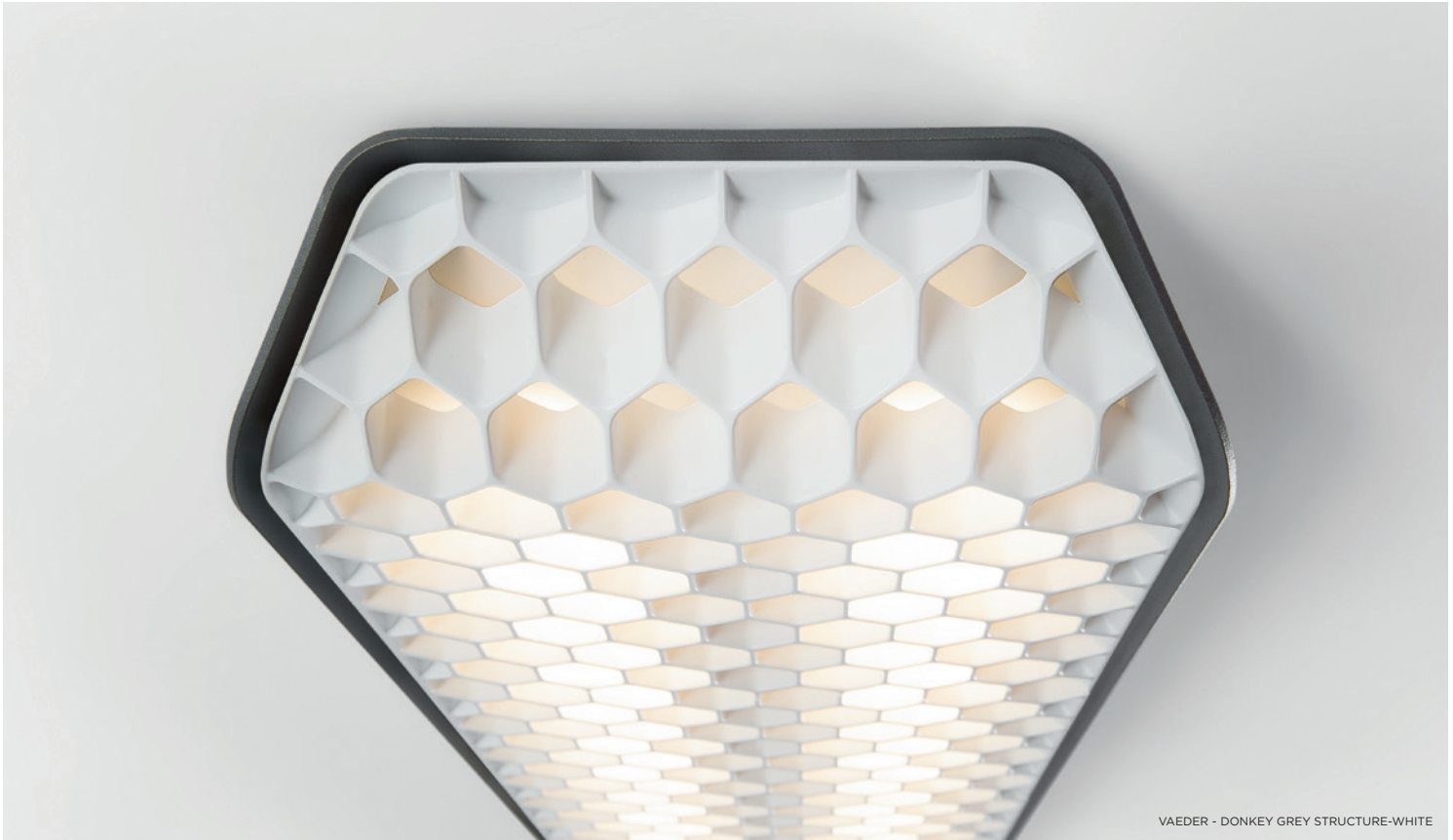
UGR16

Because of its unique design consisting of one LED source and three optical components, this luminaire provides bright and glare-free light with an optimal UGR value of 16. This makes Vaeder a perfect LED alternative to office luminaires with the traditional fluorescent T5/T8 lamps.

versions	<i>Vaeder Vaeder suspension</i>
colours	<i>black struc-black, black struc-white, donkey grey struc-black, donkey grey struc-white, white struc-black, white struc-white</i>
output*	<i>2245lm – 36W</i>
cct	<i>2700K, 3000K, 4000K</i>
cri	<i>90+</i>
dimming	<i>dali/pushdim/1-10V (G)</i>
-	
more info?	<i>supermodular.com/en/vaeder</i>

*output for white struc-white, 3000K





VAEDER - DONKEY GREY STRUCTURE-WHITE



VAEDER SUSPENSION - BLACK STRUCTURE-BLACK



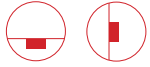


the chosen ones

VAEDER



COMO CORNER
PRIVATE RESIDENCE, AMSTERDAM (NL)



COMO CORNER

Design — Dirk Wynants

Especially conceived for renovation projects and a vibrant desire to keep installation simple, Como Corner bears no resemblance to anything in our profile families. Designer Dirk Wynants created this linear lighting solution with soft, indirect light, and an extremely subtle expression, with the purpose of confirming that challenging spaces can have beautiful light too.

So simple, so easy

This surface-mounted linear lighting solution poses no challenge to install on the wall or ceiling, where electrical outlets are limited, and where ceiling height is within easy reach. A simple aluminium extrusion fixed to the surface, 1 or 2 quality LED strips and a cover, custom-cut up to a maximum length of 4 meters.

Corners of light

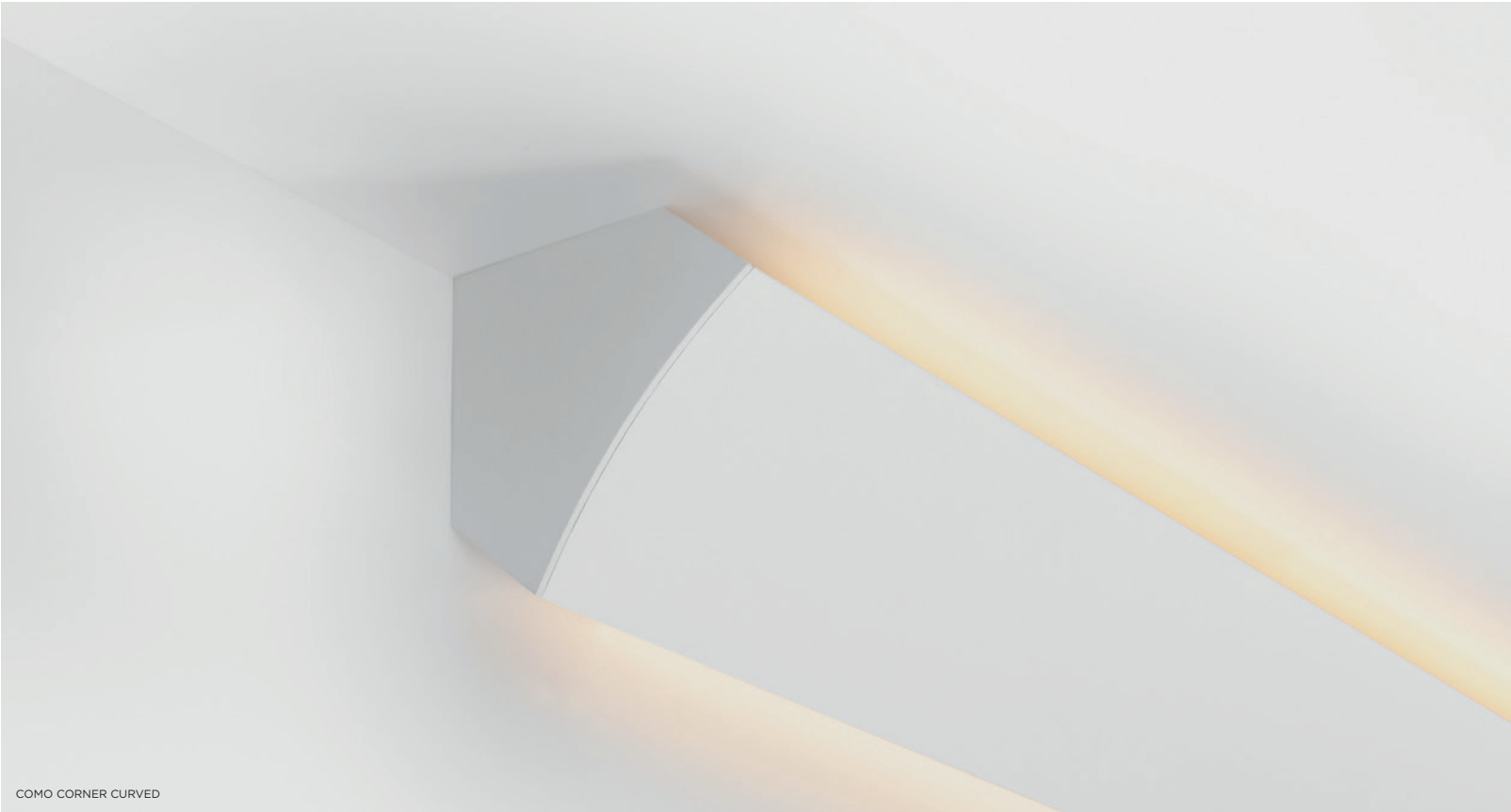
Como Corner can emit light from 1 or 2 sides. Place it horizontally between the ceiling and wall, and it offers the options of indirect light on the ceiling, a wall-wash effect, or both. Or try it again horizontally, but at any level, to show up and/or down light. Position Como Corner vertically in the corner, where two walls meet, for a lighted corner space.

Welcome visual comfort

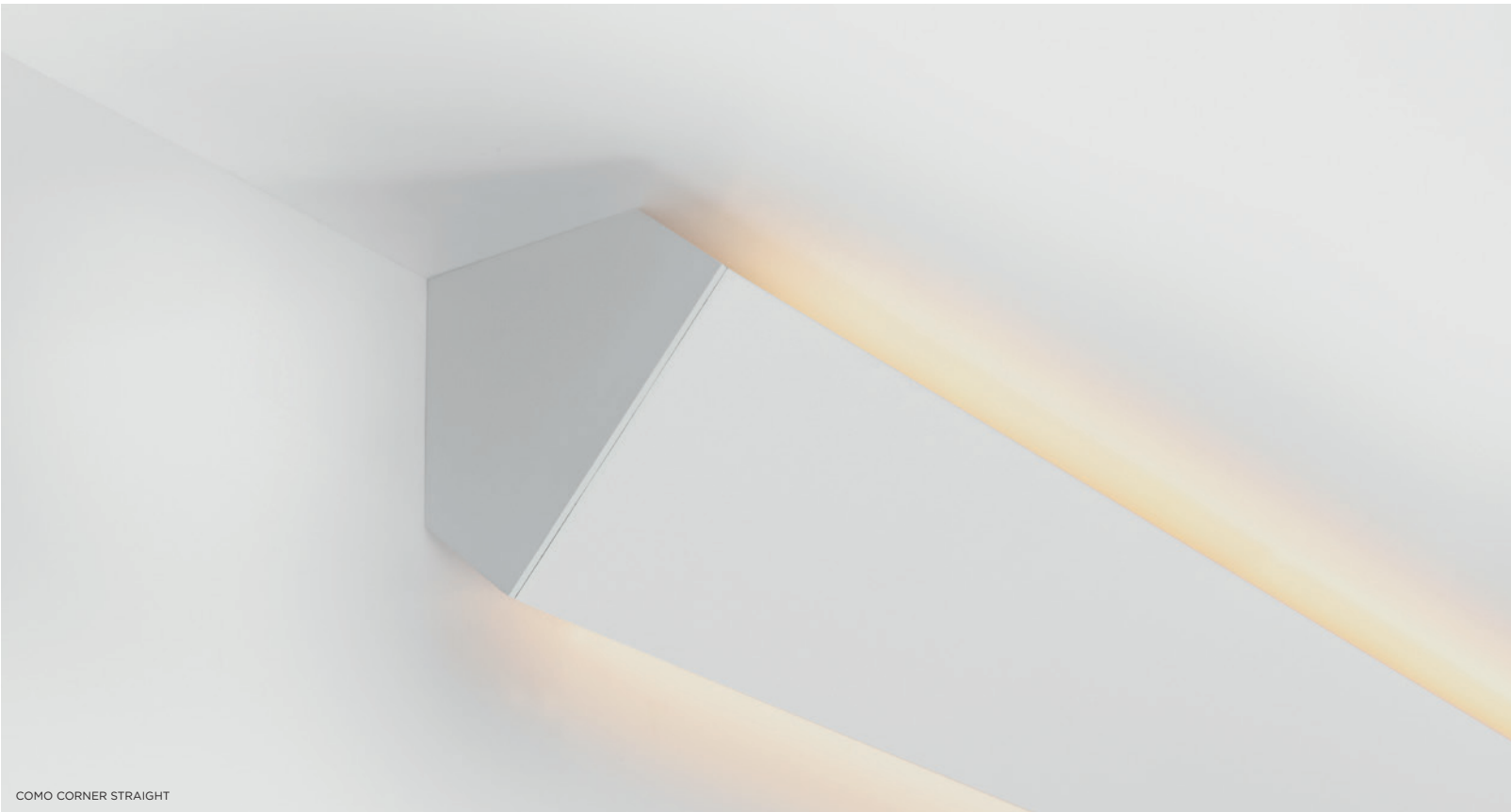
Our connected-ready profile is a new development in visual comfort. Its integrated Casambi module makes Como Corner's light a contributor to a person's well-being. Light levels to match time of day, light uniformity and indirect light (thus no glare), all contribute to Como Corner's inevitable popularity.

versions	<i>straight & curved</i>
colours	<i>white struc (paintable cover)</i>
output*	<i>up/down 1m: 1760lm/m</i>
cct	<i>2700K, 3000K, 4000K</i>
cri	<i>90+</i>
dimming	<i>non-dim, 1-10V, dali, casambi</i>
-	
more info?	<i>supermodular.com/en/como-corner configurator.supermodular.com</i>

*output for white struc, 3000K



COMO CORNER CURVED

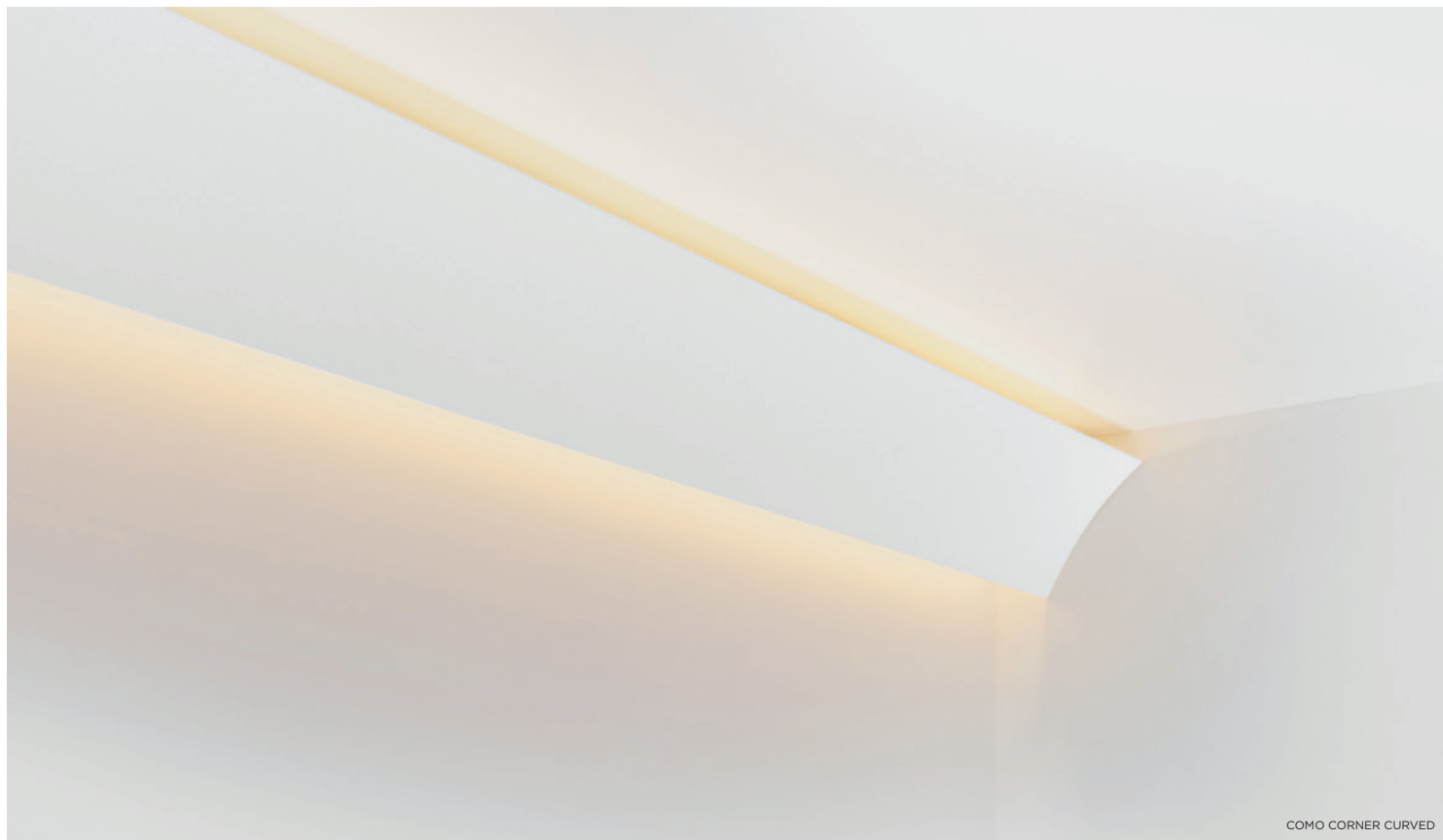


COMO CORNER STRAIGHT





COMO CORNER
PRIVATE RESIDENCE, CAPE-TOWN (ZA)



COMO CORNER CURVED



COMO CORNER STRAIGHT





the chosen ones

COMO CORNER

COMO CORNER
PRIVATE RESIDENCE, NICE (FR)





DRUPL

Inspired by the effects of sunlight through droplets of water, Modular's Drupl portfolio is named after the Dutch word for 'drop'. New advances in luminary technology make Drupl the perfect continuous lighting solution for offices, where high-quality light and anti-glare qualities are key to comfort and productivity.

Cutting-edge optical lighting

Drupl combines the benefits of unique optical lenses over highly-performant LEDs producing light at a quality of CRI90 or greater with elegant design that will transform any professional space. Available in a wide range of colours and shapes. Drupl's flange guarantees an attractive, streamlined and advanced recessed install.

2700K colour option added

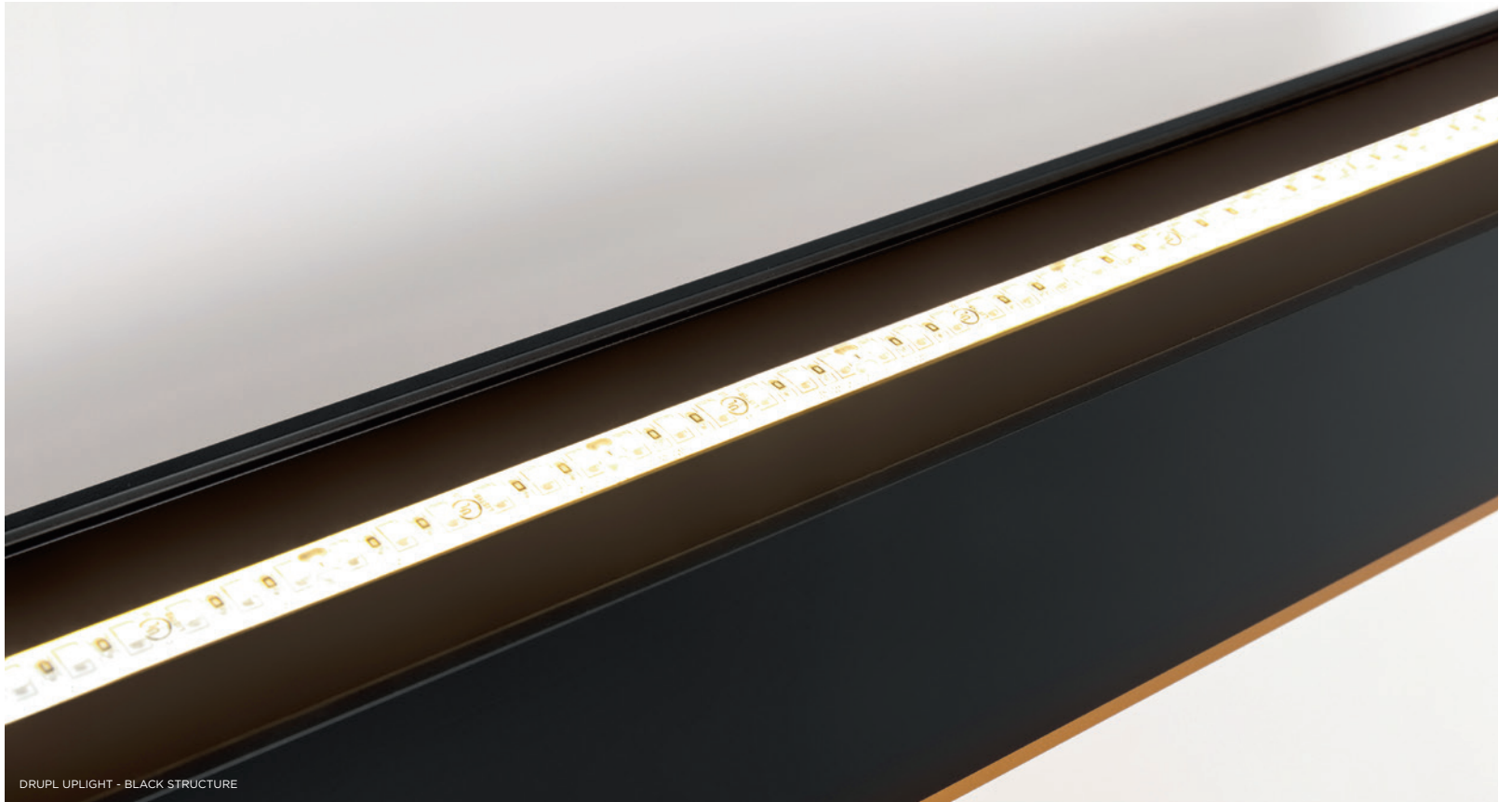
So that you can bring the most beautiful, natural and highest quality light into your space, Modular has upgraded the technology of many of our prominent linear lighting solutions. Fortimo LED Lines now come in 3 colour temperatures (2700K, 3000K and 4000K), and each colour option comes with a standard light quality of CRI90+.

Illumination that thinks for you

Using a DALI-based lighting control system, Modular now offers smart profile lighting solutions that incorporate 3 types of miniature sensors: motion, daylight and infrared. By integrating sensors, our profiles are programmed to regulate light levels based on ambient light, time of day and/or presence in rooms. The result is maximum comfort, and energy savings of up to 75%.

versions	<i>Drupl 70 (surface, suspended) Drupl 70 flange (recessed) Drupl upright</i>
finishing profiles	<i>curved, sharp, straight</i>
colours	<i>white struc, black struc, anodized matt black, anodized gold, anodized alu</i>
output*	<i>910lm – 9W (per LED line)</i>
cct	<i>2700K, 3000K, 4000K</i>
cri	<i>90+</i>
optics	<i>lens technology 50°, 80°</i>
dimming	<i>1-10V, pushdim, dali (GI)</i>
-	
more info?	<i>supermodular.com/en/drupl-70-curved supermodular.com/en/drupl-70-sharp supermodular.com/en/drupl-70-straight configurator.supermodular.com</i>

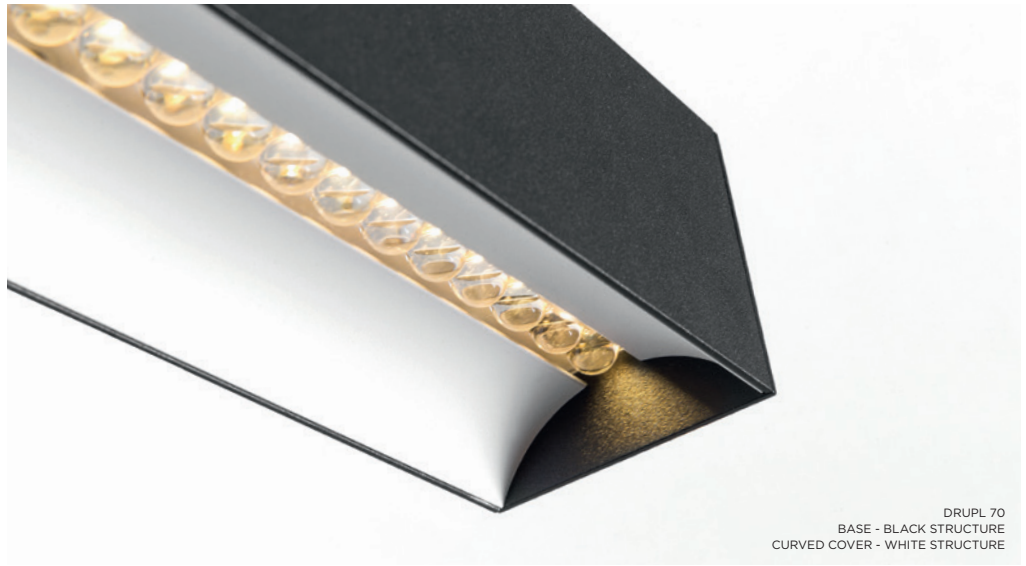
*output for white struc, 3000K, lens 50°



DRUPL UPLIGHT - BLACK STRUCTURE



DRUPL UPLIGHT - WHITE STRUCTURE







~ DRUPL UPLIGHT
PRIVATE RESIDENCE, ZOTTEGEM (BE)





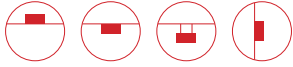
DRUPL
MOVE CAR SHOP, AMSTERDAM (NL)
QUA ASSOCIATES



DRUPL
MOLLIE PAYMENTS, AMSTERDAM (NL)
HEYLIGERS DESIGN + PROJECTS



SLD50 HIGH
PRIVATE RESIDENCE, VIENNA (AT)



SLD50

versions	<i>SLD50 poly out SLD50 (high) poly in SLD50 (high) office compliant SLD50 naked SLD50 (high) eyeball</i>
colours	<i>anodized alu, anodize champagne, white struc, black struc, gold (only for SLD50 naked inner profile)</i>
output*	<i>poly out: 555lm – 8W (per LED line) poly in: 539lm – 8W (per LED line) high poly in: 499lm – 8W (per LED line) office compliant: 728lm – 8W (per LED line) high office compliant: 696lm – 8W (per LED line) naked: 1454lm – 26W eyeball: 544lm – 8W eyeball naked: 622lm – 7.5W</i>
cct	<i>2700K, 3000K, 4000K</i>
cri	<i>90+</i>
optics	<i>poly, prismatic poly, 25° (eyeball)</i>
dimming	<i>1-10V, pushdim, dali, trailing edge (eyeball) (GI)</i>
adjustability	<i>h 360° v30° (eyeball)</i>
-	
more info?	<i>supermodular.com/en/sld50-naked supermodular.com/en/sld50-office-compliant supermodular.com/en/sld50-poly-in supermodular.com/en/sld50-poly-out supermodular.com/en/sld50-high configurator.supermodular.com</i>

*output for white struc, 3000K, 25° (if applicable)

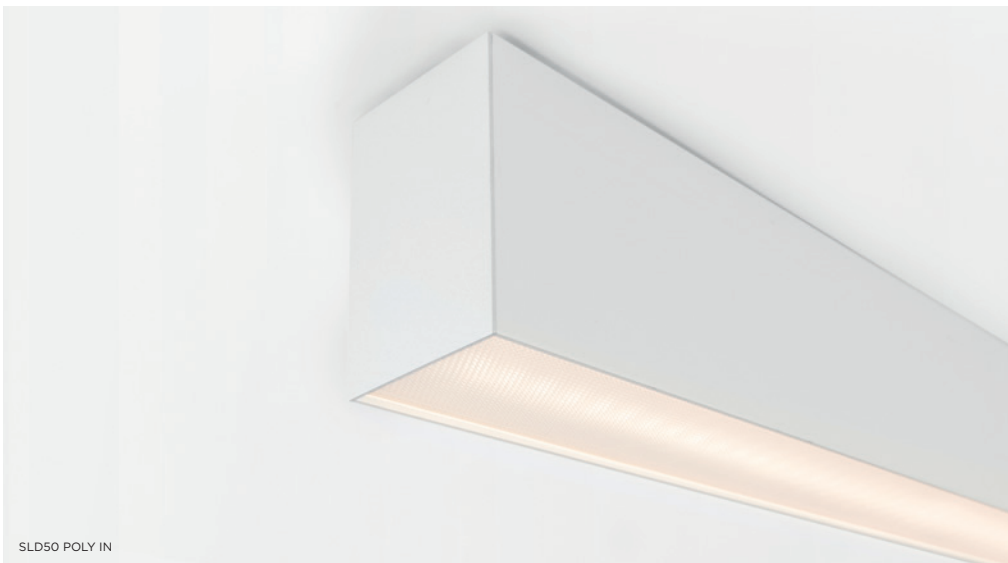
A member of our popular SLD family, SLD50 is a thin, attractive (50 mm wide) variant. To complement its linear light, designers can incorporate Modular's Eyeball, a small yet highly powerful, adjustable spot that can be rotated 360° and adjusted 30° in both directions. Its sleek design makes SLD50 a perfect solution for offices, as well as for private homes and hospitality environments.

The newest member of our gang

With the SLD50 naked you can think up your own configuration: with different outer and inner profiles in different colour combinations, including the newest addition champagne, 4 possible mountings, the naked linear LED tubes that come in 3 different lengths and the option to add 1 or 2 accent lights, in the form of our naked Eyeball luminaires. The warm colour options for the inner profiles (gold and champagne) make sure these luminaires are ideal to be used in domestic or hospitality settings.

Always aim high

If more powerful light combined with the same brilliant esthetics of SLD50 naked is your desire, SLD50 high fulfills it. Perfect for a space in which users require an extra degree of visual comfort. Its deep recessed light units provide powerful luminance, the perfect fit for an office looking to add architectural feel to its ambiance. Available in SLD50 colours, trimless, in a surfacemounted, suspended and recessed version, and with flange, for the recessed version only.





SLD50 WITH EYEBALL AND FORTIMO LEDLINE



SLD50 NAKED WITH EYEBALL AND LINEAR LED



SLD50 HIGH
OFFICE, MELBOURNE (AU)

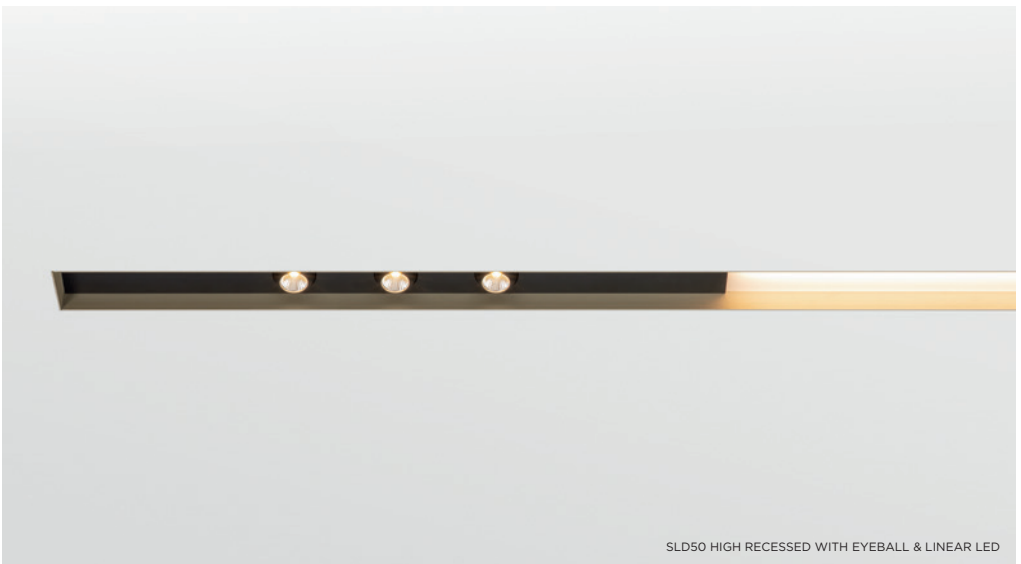
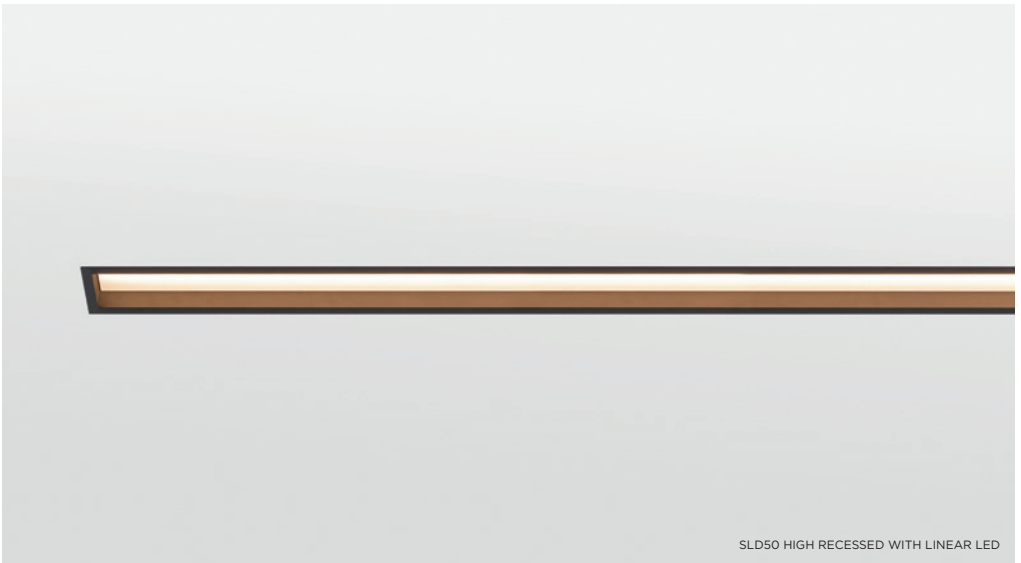
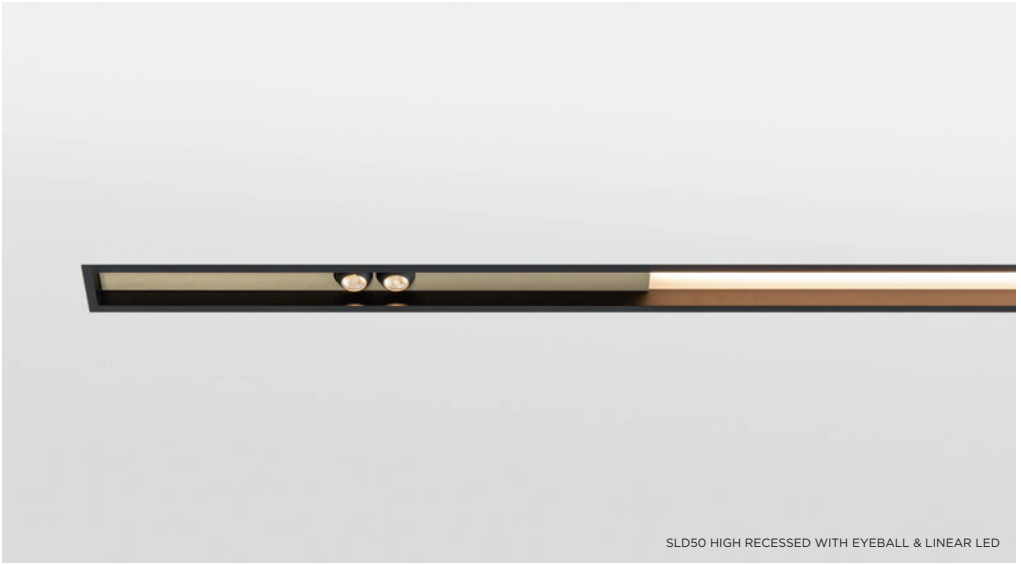


the chosen ones

SLD50

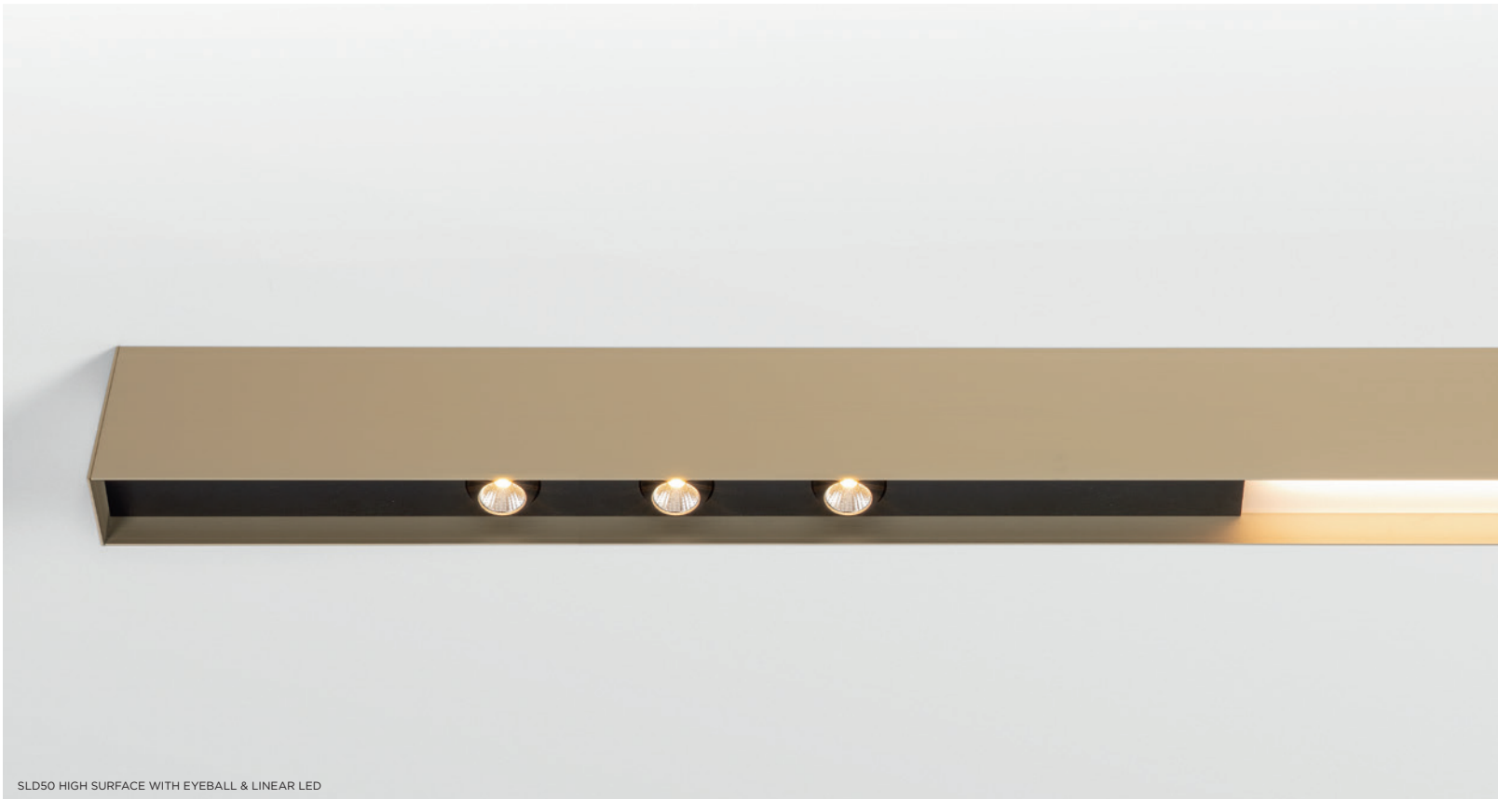
SLD50
JPS.ARCHITECTEN, AMSTERDAM (NL)
JPS.ARCHITECTEN







SLD50 HIGH SUSPENSION WITH EYEBALL



SLD50 HIGH SURFACE WITH EYEBALL & LINEAR LED



SLD50 NAKED
PRIVATE RESIDENCE, BUDAPEST (HU)

the chosen ones

SLD50 — HIGH





the chosen ones

SLD50

SLD50 NAKED
PRIVATE RESIDENCE, ROTTERDAM (NL)
DOEN



SLD50, SL MICRO
AZ ZENO, KNOCKE (BE)
B2AI - BOECK ARCHITECTS - AAPROG



the chosen ones

SLD50

SLD50
HAVECON, BLEISWIJK (NL)
STUDIO LANOVV



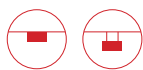


the chosen ones

SLD50



MP78
INSURANCE LIPPENS, BRECHT (BE)
BHOOM



MP78

MP78 is one of the thinnest profiles on the market. In combination with LED lines, LED spotlights or the directional spotlight Rektor, the MP78 is your ideal ally for any project in which you wish to provide both basic and accent lighting with a single fixture.

Versatile lighting

MP78 is a LED designated profile. For general lighting, use LED lines. For accent lighting, LED spotlights are available in warm or neutral white, in single or double lamp modules. With its sleek looks, the Rektor directional surface-mounted spotlight is a perfect match for the MP78 and makes the profile particularly versatile.

Ingenious and sleek

Its 78mm width and 36mm height makes it a very slim fixture. An ingenious detail is that the heat is automatically conducted away by the aluminium housing. The standard finishes are a white or black structure. You can also create your own colour combinations by choosing a base plate and top plate in different colours. MP78 can be either surface mounted or suspended.

versions	3 light modules: MP78 LED line MP78 LED spot MP78 Rektor
colours	white struc, black struc
output*	LED line: 575lm/LED line – 8W LED spot: 1106lm – 13W Rektor: 900lm – 13W
cct	2700K, 3000K, 4000K
cri	90+
optics	poly diffuse Rektor & LED spot: 25°, 40°
dimming	1-10V, dali, pushdim (GI/GE)
adjustability	h 360° v 90° (Rektor)
-	
more info?	supermodular.com/en/mp78 configurator.supermodular.com

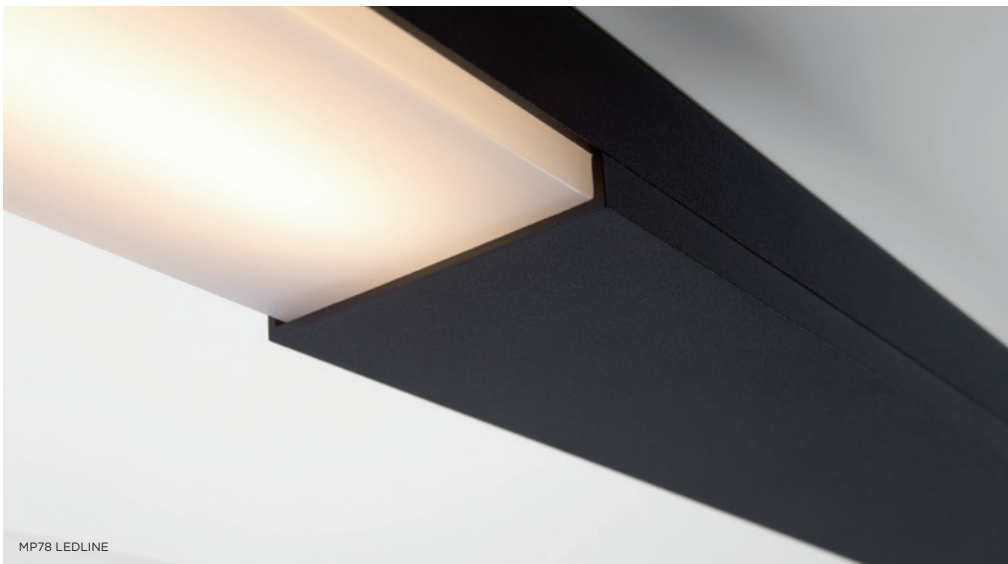
*output for white struc, 3000K, 25° (if applicable)



MP78 LED & LEDLINE



MP78 LED & LEDLINE



MP78 LEDLINE



MP78 LEDLINE



MP78 REKTOR LED & LEDLINE



MODULAR
LIGHTING -
INSTRUMENTS





BOLD
PRIVATE RESIDENCE, HARELBEKE (BE)



BOLD

Design — Studio Kees

It doesn't take gaudy or pretentious to attract attention. Strong lines, oblique angles, an element of motion and a hidden source of light make Bold a true statement. Bold was designed in close collaboration with the Rotterdam-based designer Studio Kees.

A paradox in luminaires

Inspired by the works of Escher as well as some of the most fearless architectural feats of modern times, Bold manipulates perspective to blend in and stand out at the same time. A Bold fixture is the epitome of daring while playing in harmony with the other stylistic elements of your residential or hospitality space.

Audacious from every angle

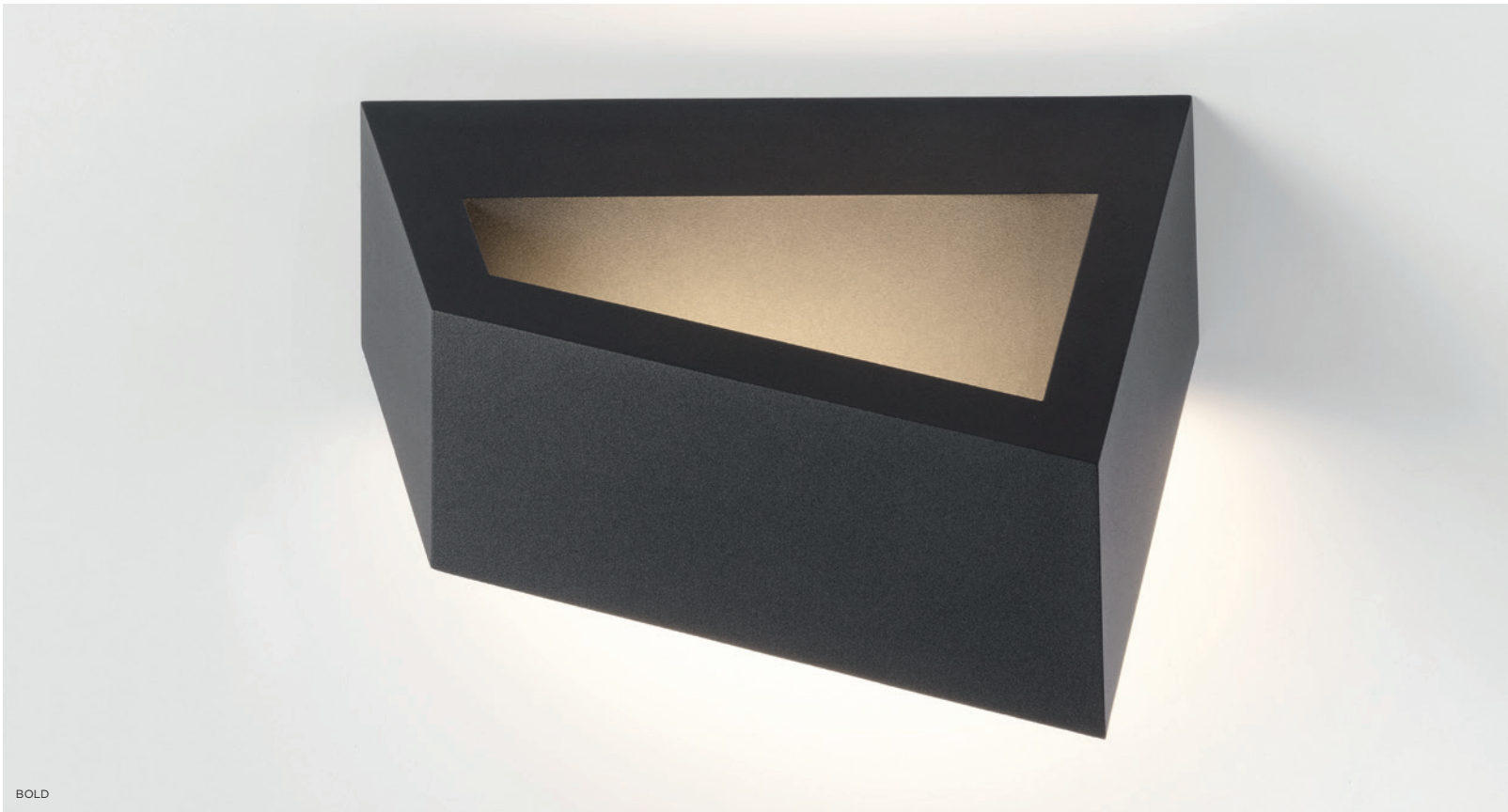
Bold can be mounted to a wall in a vertical or horizontal position and flipped around 180 degrees – even after installation of the wall plate. Installation is a simple process, with no screws visible thanks to a flush-fitted magnetic cover plate. The shape and light effect also changes depending on perspective, as the single light source is artistically hidden within the frame of the fixture and directs its light toward the opposite plane of the wall.

No visible screws

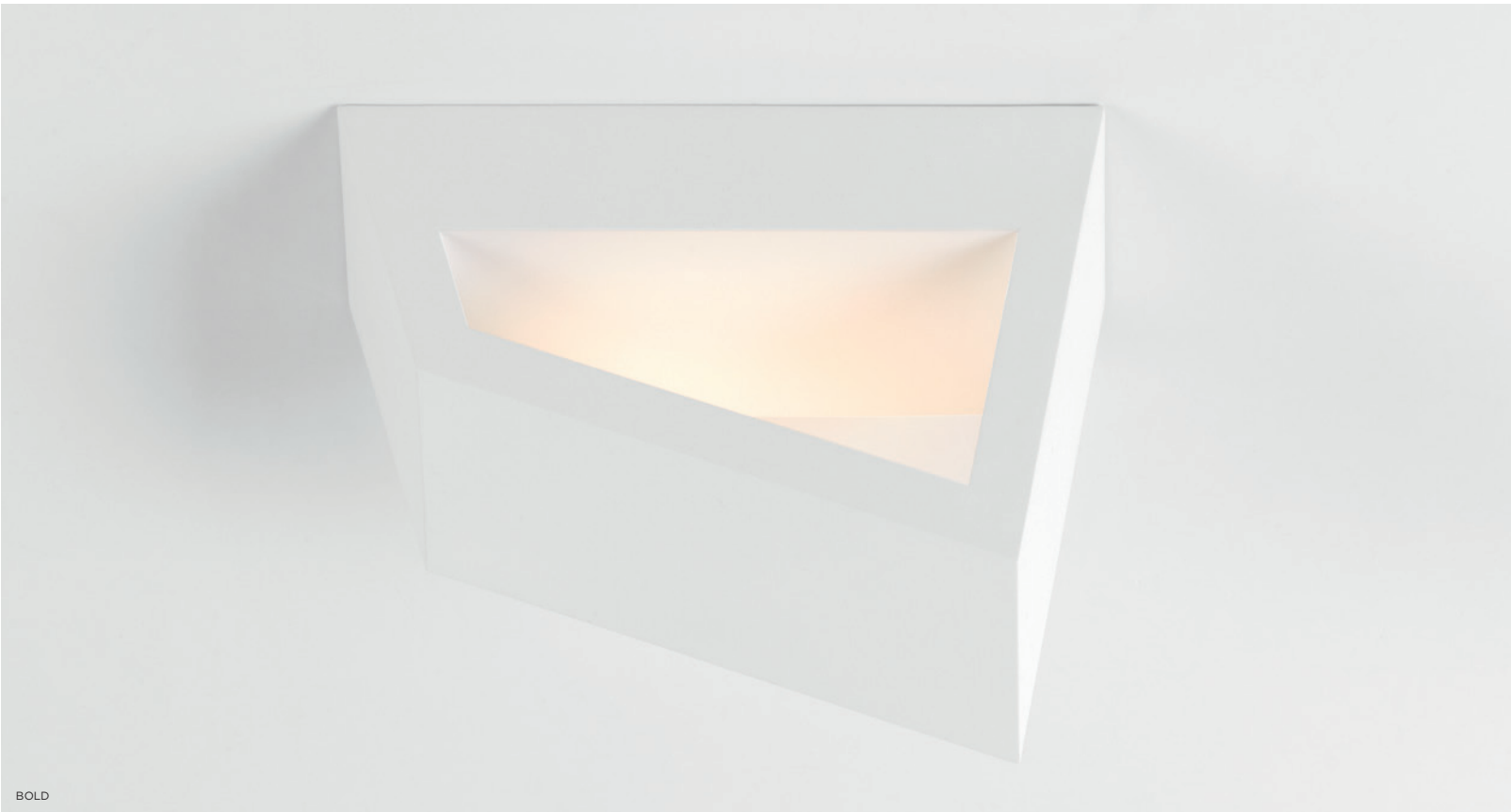
Thanks to the magnetic coverplate, fixation of the screws can be done inside the fixture. Thin design-gap visible along one side.

colours	<i>black struc, white struc</i>
output*	<i>818lm – 11W</i>
cct	<i>2700K, 3000K</i>
cri	<i>90+</i>
dimming	<i>trailing edge dimmable, 1-10V/pushdim (GI)</i>
-	
more info?	<i>supermodular.com/en/bold</i>

*output for white struc, 3000K



BOLD



BOLD



the chosen ones

BOLD

BOLD
PRIVATE RESIDENCE, GITS (BE)



BOLD
PRIVATE RESIDENCE, GITS (BE)

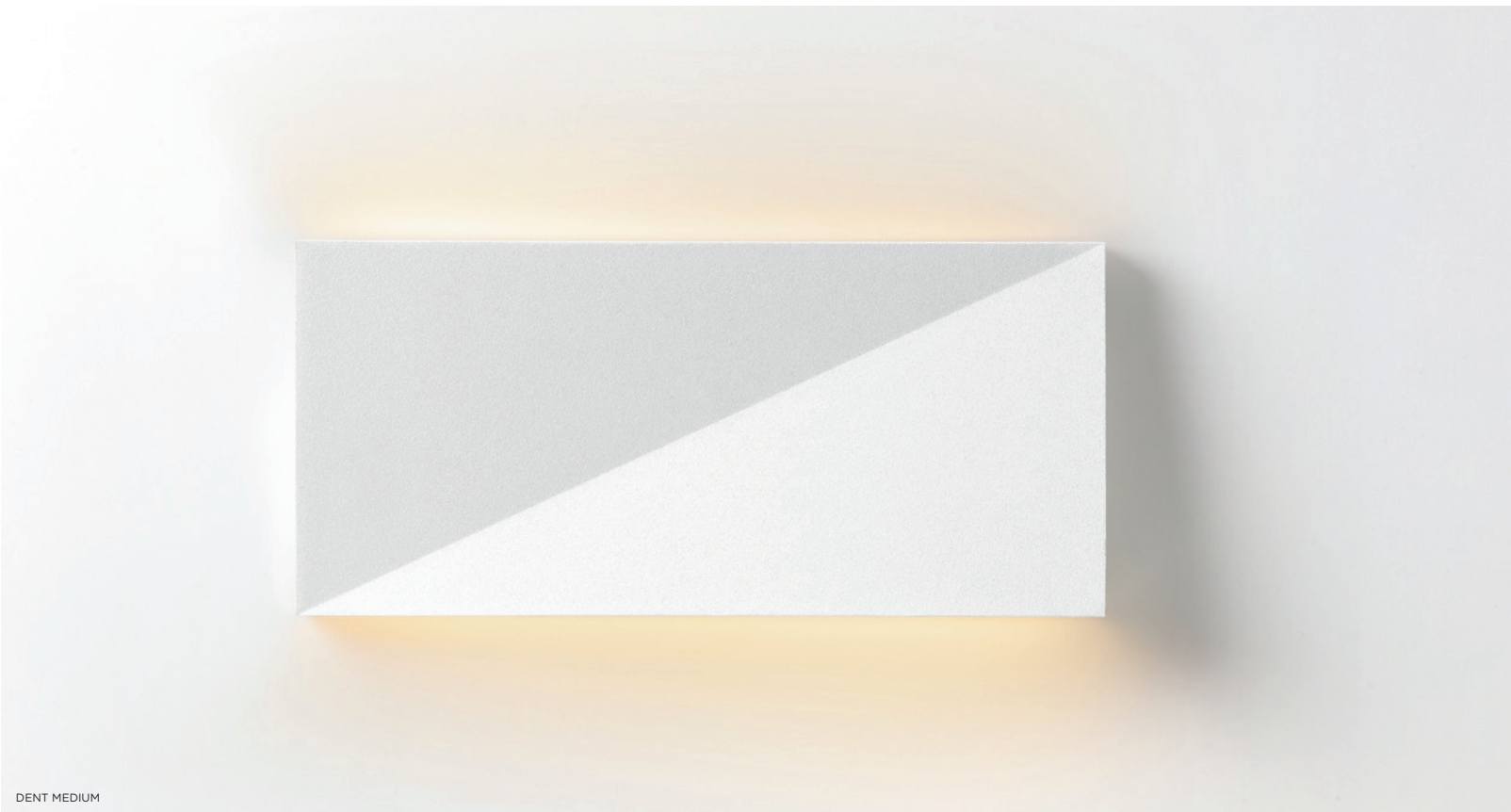


the chosen ones

BOLD



DENT SMALL



DENT MEDIUM



DENT

Design — Jeffrey Huyghe

This is the luminaire with a playful personality. Looking one way, and then another. Its design is enigmatic, as is the light it provides. And then there's what can be done with it, and where. Alone on a residential wall, it's minimalist and beautiful. Together in a large public space, they become an artful lightscape with puzzling lines and angular paths.

A twofold design, one art installation

Dent is an excellent candidate for an art installation that demands minimalistic beauty, originality and function. One, two, or even several units of different shapes and colours can be combined in wildly playful patterns and landscapes that enhance the mathematical cleverness and playfulness of the design.

Endless applications, endless play

Dent is an ultra-thin (25mm) wall fixture that fits in a number of residential and hospitality environments. Narrow hallways, large spaces, cozy spaces, walls of any dimension. Our minimalistic fixture with an edge is ready to play.

Playful modularity for more than light

Dent comes in three sizes. Small comes as a square, medium and large are rectangular. Create mind-boggling artistic landscapes with this geometrical design. Squares, rectangles, bigger rectangles, lines. As the name suggests, Dent's body is slightly indented, adding to the depth of any configuration.

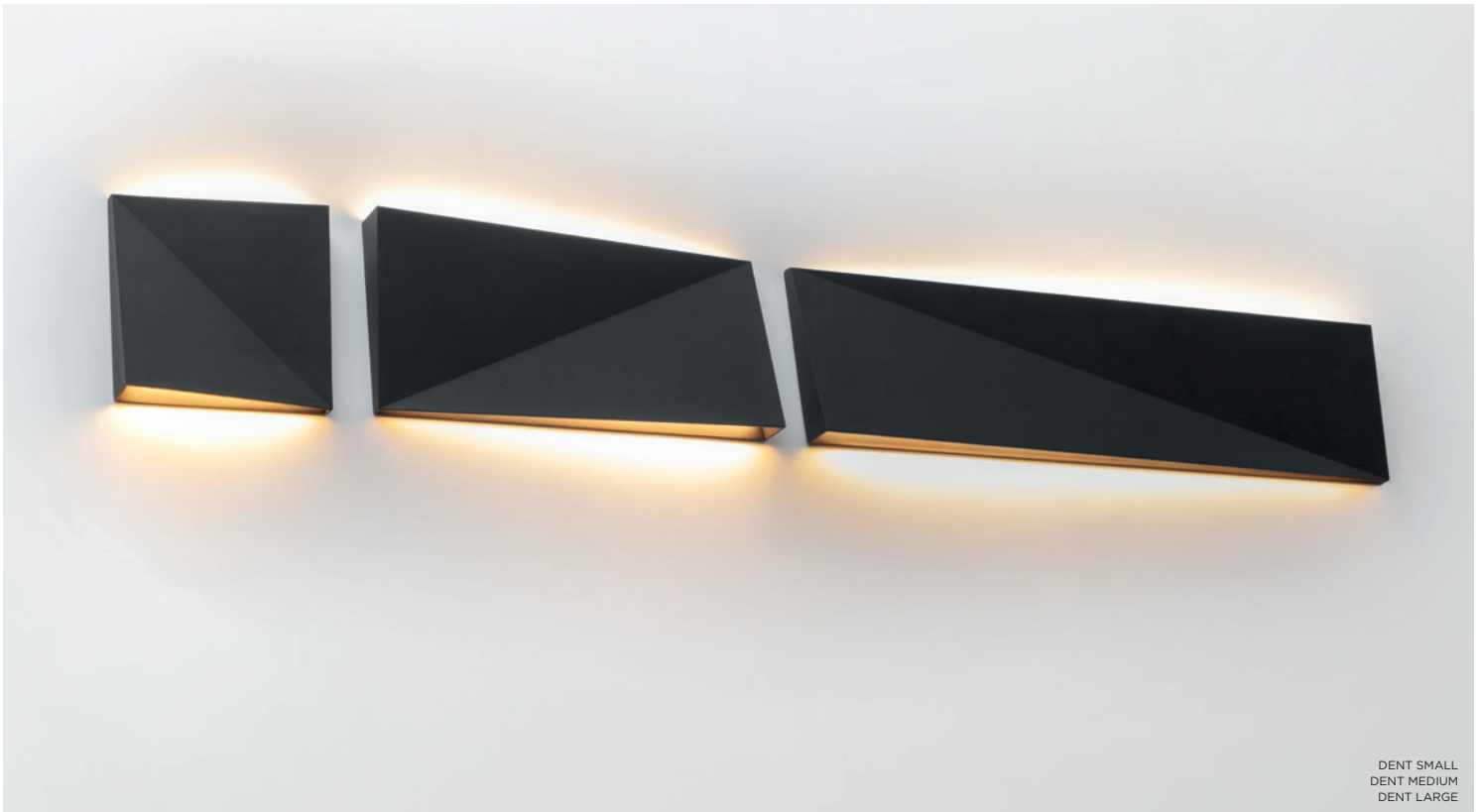
versions	<i>small, medium & large</i>
colours	<i>black struc, white struc</i>
output*	<i>small: 413lm – 7.8W medium: 729lm – 17.6W large: 833lm – 17.6W</i>
cct	<i>2700K, 3000K</i>
cri	<i>90+</i>
dimming	<i>trailing edge, 1-10V, pushdim, dali (GE)</i>
-	
more info?	<i>supermodular.com/en/dent</i>

*output for white struc, 3000K





DENT SMALL



DENT SMALL
DENT MEDIUM
DENT LARGE







SULFER, MARBUL SUSPENSION
B. ROOM, BRUGGE (BE)



SULFER

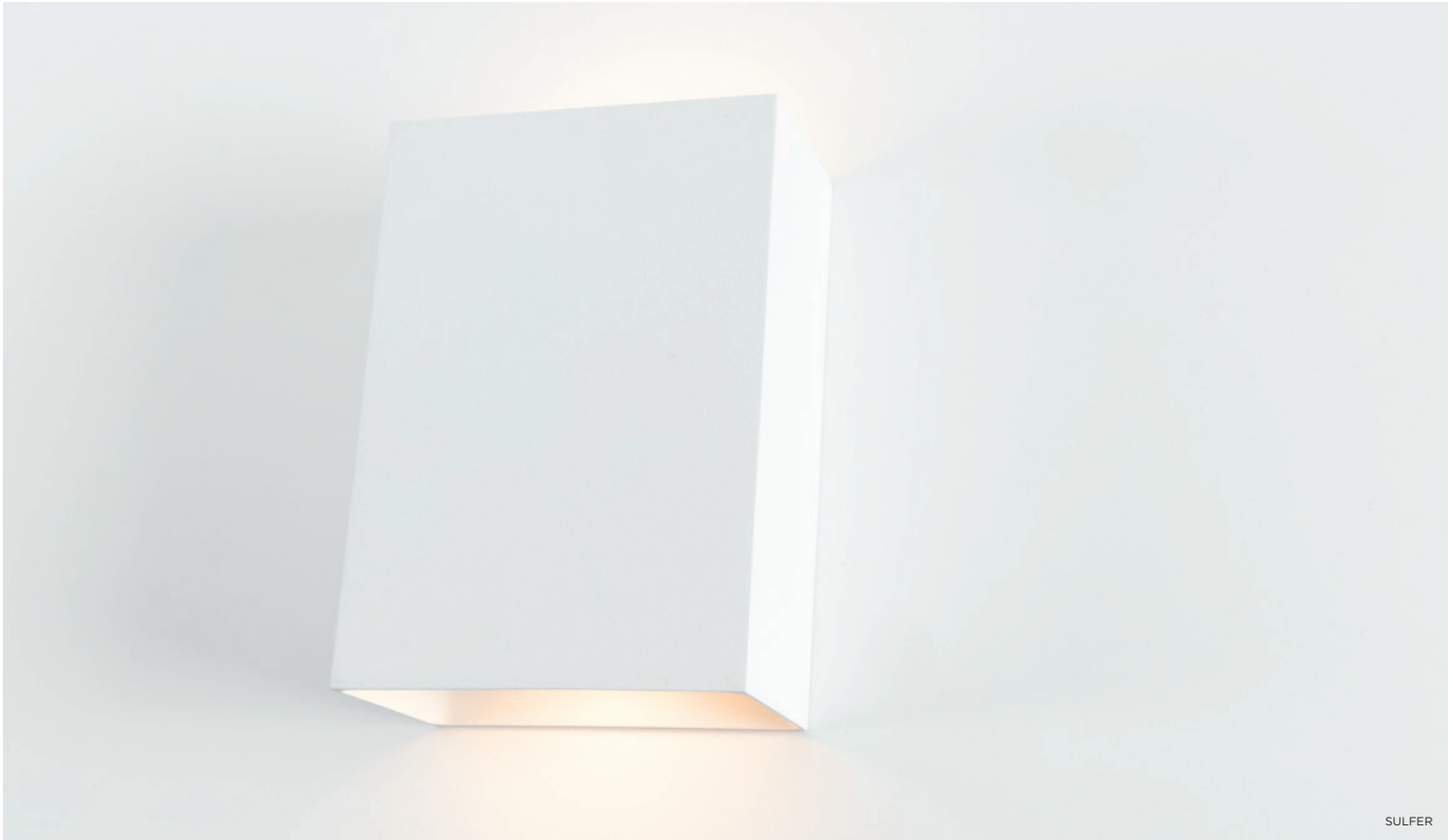
Sulfer is a minimalist square-shaped fixture. The cast aluminium luminaire brings a modern accent to walls, whether in- or outside (IP54) homes, hotels, restaurants, etc. By default, Sulfer diffuses a wide beam (flood), yet the fixture comes optionally with additional beam angle plates (medium and small) to let you customize the beam. Since the diffuser is recessed into the casing, Sulfer shines indirect light, ensuring you will never be blinded by its beam.

versions	<i>Sulfer</i>
colours	<i>black struc, white struc</i>
output*	<i>413lm – 8W</i>
cct	<i>2700K, 3000K</i>
cri	<i>90+</i>
dimming	<i>trailing edge dimmable (GI)</i>
ip	<i>55</i>
-	
more info?	<i>supermodular.com/en/sulfer</i>

*output for white struc, 3000K



SULFER
PRIVATE RESIDENCE, AMSTERDAM (NL)



SULFER



SULFER



SULFER
MOLLIE PAYMENTS, AMSTERDAM (NL)
HEYLIGERS DESIGN + PROJECTS



the chosen ones

SULFER





TRAPZ

With their indirect lighting and subtle shadow effects, wall fixtures are undoubtedly atmosphere creators. Trapz, our organic interpretation inspired by a trapezium, is no different. The flattened cylinder has been finished with two oblique openings, which allow you to see the contrasting interior of the luminaire and immediately create an unusual chiaroscuro effect.

colours *black struc-gold, cacao bronze-black, metallic blue-alu, silky grey-champagne, white struc-champagne*

output* *587lm – 9W*

cct *2700K*

cri *90+*

dimming *trailing edge dimmable*

-

more info? supermodular.com/en/trapz

*output for white struc-champagne, 2700K



TRAPZ - SILKY GREY-CHAMPAGNE



the chosen ones

TRAPZ

TRAPZ
PRIVATE RESIDENCE, ROTTERDAM (NL)
LINDA LAGRAND





TRAPZ
MOLLIE PAYMENTS, AMSTERDAM (NL)
HEYLIGERS DESIGN + PROJECTS



the chosen ones

TRAPZ





DUELL wall

With its gentle curves, Duell gives every room a softer touch. As a wall luminaire, Duell creates a wide fan of light on the wall, both upwards and downwards. The double-walled housing allows you to play with colour, bringing a more authentic feel into the room.

colours *black struc-gold, cacao bronze-black,
metallic blue-alu, silky grey-champagne,
white struc-champagne*

output* *775lm – 14W*

cct *2700K*

cri *90+*

dimming *trailing edge, 1-10V, pushdim (GI)*

-

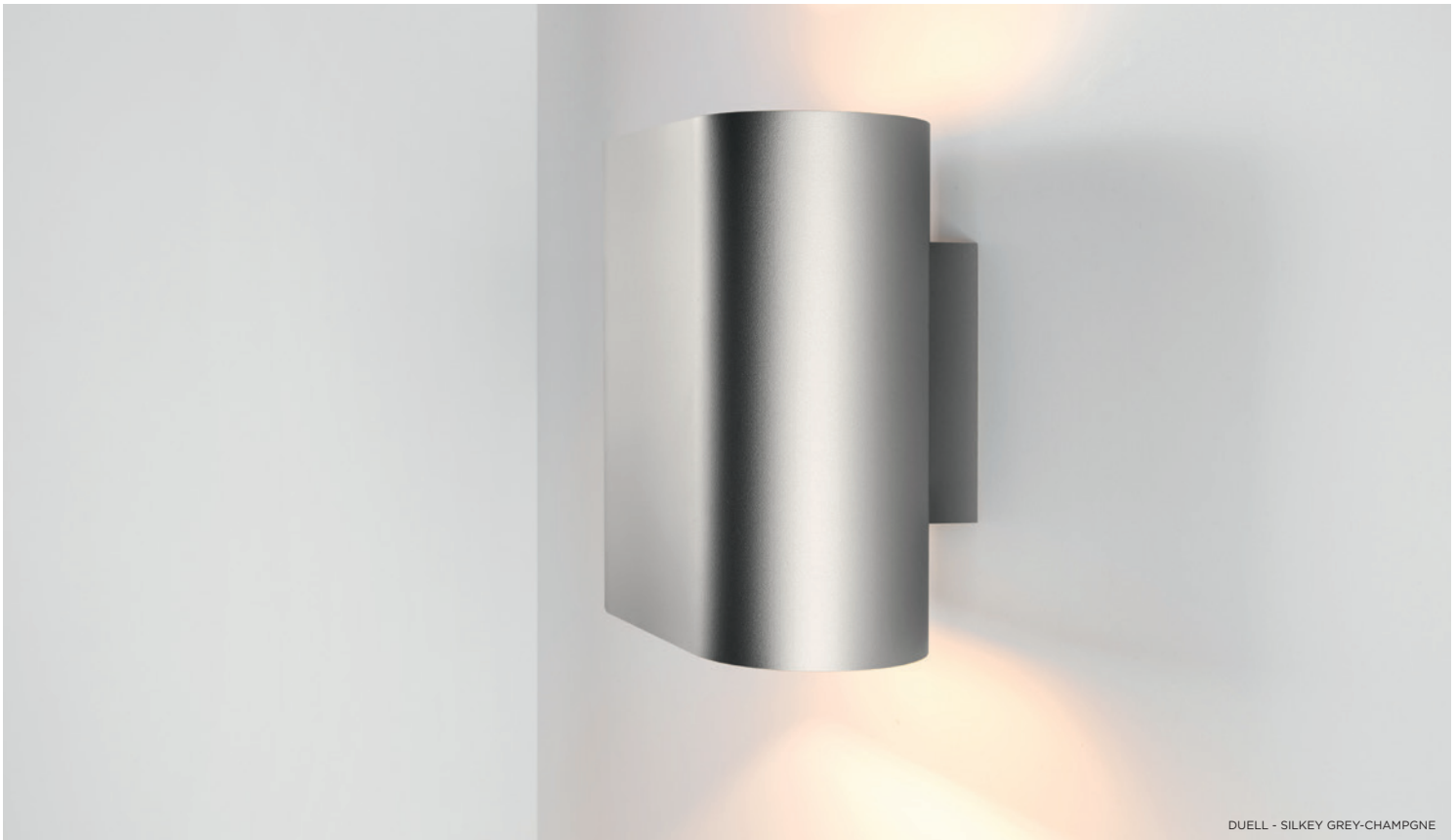
more info? *supermodular.com/en/duell-wall*

*output for white struc-champagne, 2700K





DUELL - BLACK STRUC-GOLD



DUELL - SILKEY GREY-CHAMPGNE



DUELL
PRIVATE RESIDENCE, ROTTERDAM (NL)
DOEN



the chosen ones

DUELL WALL

MODULAR LIGHTING INSTRUMENTS — HEADQUARTERS

Armoedestraat 71
8800 Roeselare
Belgium
welcome@supermodular.com – www.supermodular.com

SALES NETWORK

For an updated list please visit www.supermodular.com/en/company/dealers

PHOTO REFERENCES

Antoine Martel	175
Beeldcollectief	94, 177, 179, 198, 212
BOA	41, 42, 44, 45, 53, 54, 55, 60, 61, 62, 66, 68, 71, 72, 78, 84, 88, 102, 108, 109, 114, 116, 117, 132, 136, 158, 159, 164, 232, 238
Cedric Helsly	114
De Maatwerker	50
Dion Robenson	222
Enrico Veronese	176
Grégory Copitet	242
Jan Buteijn	139
Jan Luijk	138, 182, 223
Jan Opdekamp	verso cover, 2
Jim Van Loo	74, 79, 81, 82, 92, 98, 100, 103, 126, 130, 140, 161, 200
Koen Devloo	160
Lenzer	184, 218
Luc Boegly	170, 174, 175, 178
Maister	152
Nicole Rodenburg	213, 254
Peter Baas	120, 245
Philip Braem	80, 81, 98, 99, 128, 142, 214, 236
Rick Geenjaar	90, 177
Sarah Wijzenbeek	168
Studio Flusser	178
Torsten Karpf - Foto Thome	101
Gwen Mustamu	124, 201, 247, 250, 252
William Henrion	52
Wouter Van der Sar	99, 134, 139, 141, 198, 201, 216, 240, 247, 248

© 2021 Modular Lighting Instruments - all rights reserved

Modular L.I. reserves the right to alter material, dimensions and characteristics without prior notice.
This catalogue replaces all previous catalogues.
Read installation instructions carefully. Technical information on the installation instruction has precedence over the information in the catalogue and the legend.
Our general terms and conditions shall apply notwithstanding any stipulation to the contrary to all the orders and agreements with Modular L.I.
You can obtain a copy of these conditions on demand.

For latest information and specifications of the full Modular L.I. range visit www.supermodular.com

Symbols legend



ceiling application
recessed mounting



ceiling application
surface mounting



ceiling application
suspended mounting



wall application
surface mounting



connected lighting compatible
info.supermodular.com/en/connected-lighting



connected lighting compatible
info.supermodular.com/en/connected-lighting



MODULAR
LIGHTING —
INSTRUMENTS

Get inspired. Follow us.

@SUPERMODULAR

*We love to share our love for light and beauty.
Join us on Instagram or Pinterest and stay inspired.*

